

# DEL VESCOVO DESIGN GROUP

ARCHITECTURE & INTERIOR DESIGN

451 North Orange Avenue, Sarasota, FL 34236  
Tel: 941.321.9507  
email: Timothy@DelDesign.com  
url: www.DelDesign.com  
FLORIDA LICENSE: AA-26002369

PROJECT  
TENANT INFILL  
**BROADWAY PLACE**  
3831 BROADWAY  
FORT MYERS, FL 33901

OWNER:  
PROJECT NUMBER: 22-43

**APPROVAL**  
SIGN AND DATE BELOW FOR APPROVAL TO  
MOVE FROM [ CONSTRUCTION DOCUMENT ] PHASE  
TO [ CONSTRUCTION ADMINISTRATION ] PHASE

Date  
Approval Signature

Printed Name  
CONSULTANTS  
  
**ENGINEERING SOLUTIONS**  
1726 EAST 7TH AVE, SUITE 4  
TAMPA, FL 33605  
813.291.7094

TO THE BEST OF MY KNOWLEDGE, THESE PLANS AND SPECIFICATIONS ARE COMPLETE AND COMPLY WITH THE 2020 FBC 7TH EDITION FOR BUILDING, PLUMBING, MECHANICAL AND NEG 2017, 2020 7TH EDITION FLORIDA FIRE PREVENTION CODE, 2018 NFPA 1, 2018 NFPA 101, 2016 NFPA 13 13R 13D, 2016 NFPA 72, 2017 NFPA 70

DRAWINGS  
**CONSTRUCTION DOCUMENT**

Revisions  
No. Date Description

SCALE  
AS NOTED

DRAWN BY  
-

CHECKED BY  
-

PERMIT SUBMISSION PLOT DATE  
January 27, 2023

SHEET TITLE  
**ELECTRICAL COVER SHEET**

SEAL SHEET NUMBER

E1

TIMOTHY A. DEL VESCOVO  
FLORIDA LICENSE: ID-5344

© Copyright Del Vescovo Design Group, Inc. All Rights Reserved 2022

1 2 3 4 5 6 7 8 9 10

## GENERAL ELECTRICAL NOTES

- ALL ELECTRICAL WORK SHALL BE IN ACCORDANCE WITH THE LATEST EDITION OF THE NATIONAL ELECTRICAL CODE AND ALL LOCAL AND STATE CODES.
- ALL MATERIAL, EQUIPMENT & APPLIANCES SHALL BE NEW AND SHALL CONFORM TO THE STANDARDS OF THE UNDERWRITER'S LABORATORIES, INC., AND THE NATIONAL MANUFACTURERS ASSOCIATION.
- ALL ELECTRICAL PERMITS AND INSPECTION FEES SHALL BE OBTAINED AND PAID FOR BY THE ELECTRICAL CONTRACTOR.
- DRAWINGS ARE DIAGRAMMATIC ONLY AND INDICATE ONLY THE GENERAL ARRANGEMENT. SEE ARCHITECTURAL DRAWINGS FOR EXACT DIMENSIONS (EXCEPT AS NOTED).
- ELECTRICAL CONTRACTOR SHALL GUARANTEE ALL WORK AND MATERIALS FOR A MINIMUM OF ONE YEAR. THE ONE YEAR WARRANTY IS TO CORRESPOND WITH THE GENERAL CONTRACTOR'S ONE YEAR WARRANTY WITH THE OWNER & BUYERS.
- ELECTRICAL CONTRACTOR SHALL MAKE ALL ELECTRICAL POWER CONNECTIONS TO HVAC, PLUMBING AND OTHER EQUIPMENT AS REQUIRED.
- A COMPLETE GROUNDING SYSTEM SHALL BE PROVIDED AND INSTALLED IN ACCORDANCE WITH ARTICLE 250 OF THE NEC, AND AS SHOWN ON THE DRAWINGS.
- ALL CUTTING AND PATCHING OF WALLS AND FLOORS FOR ELECTRICAL EQUIPMENT SHALL BE THE RESPONSIBILITY OF THE ELECTRICAL CONTRACTOR.
- CONDUCTORS SHALL BE COPPER RATED AT NOT LESS THAN 600 VOLTS. MINIMUM SIZE SHALL BE #12 AWG UNLESS OTHERWISE NOTED ON THE DRAWINGS. ALL WIRE #8 AWG AND LARGER SHALL BE STRANDED. ALL CONDUCTORS #10 AND SMALLER SHALL BE SOLID, UNLESS OTHERWISE NOTED.
- BRANCH CIRCUIT CONDUCTORS SHALL BE TYPE THHN OR THWN AS REQUIRED.
- PROVIDE A PULL WIRE IN ALL EMPTY CONDUITS.
- PROVIDE A TYPED DIRECTORY IN ALL PANEL BOARDS CLEARLY DESCRIBING THE LOCATION OF AND TYPE OF LOAD BEING SERVED FOR ALL CIRCUITS.
- PROVIDE ENGRAVED PHENOLIC NAMEPLATES FOR ALL PANEL BOARDS AND DISCONNECT SWITCHES, WHITE LETTERS ON BLACK BACKGROUND.
- FUSES 0 - 600 AMPS SHALL BE UL CLASS "RK-1" LOW PEAK DUAL ELEMENT TIME DELAY WITH 200,000 AMPERE INTERRUPTING RATING AS MANUFACTURED BY BUSS. UNLESS NOTED OTHERWISE
- VERIFY ALL REQUIREMENTS AND COORDINATE EXACT LOCATION OF INCOMING ELECTRICAL SERVICE WITH LOCAL POWER COMPANY PRIOR TO PROJECT START UP. NOTIFY ENGINEER OF ANY CHANGES.
- PROVIDE SCHEDULE 40 PVC CONDUIT UNDERGROUND FROM TELEPHONE EQUIPMENT ROOM TO CONNECTION POINT AS DIRECTED BY LOCAL TELEPHONE COMPANY.
- ALL TERMINALS, SPlicing CONNECTORS, LUGS, ETC. SHALL BE IDENTIFIED FOR USE WITH THE MATERIAL (CU/AL) OF THE CONDUCTOR AND SHALL BE PROPERLY INSTALLED. ALL TERMINALS, SPlicing CONNECTORS, LUGS, ETC. SHALL BE IDENTIFIED FOR USE WITH 75°C RATED CONDUCTORS.
- THE ELECTRICAL CONTRACTOR SHALL BE RESPONSIBLE FOR PROTECTING ALL ELECTRICAL EQUIPMENT FROM FOREIGN MATERIAL DURING CONSTRUCTION (PAINT, SPACKLE, ETC.).
- PENETRATIONS OF REQUIRED SMOKE PARTITIONS SHALL BE SEALED USING METHODS APPROVED UNDER THE STATE BUILDING CODE. COORDINATION WITH THE GENERAL CONTRACTOR SHALL BE MAINTAINED TO INSURE THAT THIS SMOKE STOPPING IS ACCOMPLISHED.
- WHERE PENETRATIONS ARE MADE THROUGH A REQUIRED FIRE-RESISTIVE WALL, FLOOR, OR PARTITION FOR THE PURPOSE OF RUNNING RACEWAY CARRYING ELECTRICAL, TELEPHONE, TELEVISION, OR LOCAL COMMUNICATION AND/OR SIGNALING CIRCUITS, THE OPENING AROUND THE RACEWAY SHALL BE FIRE STOPPED PER THE STATE BUILDING CODE. COORDINATION WITH THE GENERAL CONTRACTOR SHALL BE MAINTAINED TO INSURE THAT THIS FIRE STOPPING IS ACCOMPLISHED. USE U.L. APPROVED ASSEMBLIES OF APPROPRIATE TYPE AND RATING ONLY (SEE A2.0 FOR ASSEMBLIES).
- IN REQUIRED FIRE RATED WALLS AND PARTITIONS, OPENINGS FOR INSTALLATION OF BOXES THAT ARE GREATER THAN 16 SQUARE INCHES SHALL BE PROTECTED AS REQUIRED BY U.L. COORDINATE CLOSELY WITH THE GENERAL CONTRACTOR TO INSURE THE INTEGRITY OF THE U.L. RATING IS MAINTAINED.
- WHERE A HOME RUN IS SHOWN THE CIRCUIT SHALL BE INSTALLED IN A DEDICATED CONDUIT, DO NOT COMBINE WITH OTHER CIRCUITS. WHERE A CIRCUIT HOMERUN IS NOT SHOWN THE CONTRACTOR SHALL COMBINE CIRCUITS AS FOLLOWS:
- A MAXIMUM OF THREE 20A BRANCH CIRCUITS OF DIFFERENT PHASES MAY BE COMBINED IN A COMMON HOMERUN SHARING A COMMON NEUTRAL OR WITH SEPARATE NEUTRALS, A TOTAL OF SIX CURRENT CARRYING CONDUCTORS MAXIMUM.  
ALL BRANCH CIRCUITS LARGER THAN 20A SHALL BE SEPARATELY HOMERUN TO THE PANEL. ALL HOME RUNS IN EXCESS OF 100' SHALL BE INCREASED ONE WIRE SIZE FROM THAT SHOWN FOR THE CIRCUIT, #10 AWG MINIMUM.
- LOWER CASE LETTER(S) INDICATES SWITCHING DESIGNATION. UPPER CASE LETTER(S) INDICATES FIXTURE TYPE. NUMBER INDICATES CIRCUIT. WHERE DUAL SWITCHING IS DESIGNATED CONTROL ONE LAMP OF TWO LAMP FIXTURES AND THE CENTER LAMP(S) OF THREE AND FOUR LAMP FIXTURES TO ONE SWITCH, AND THE REMAINING LAMPS TO THE SECOND SWITCH. CIRCUIT NUMBERS, FIXTURE DESIGNATION AND SWITCHING ARE DESIGNATED AS FOLLOWS, FIXTURE SWITCHING AND CIRCUITING ARE TYPICAL FOR ALL LIGHT FIXTURES.
- SPACING AND LOCATION OF RECEPTACLES, SHALL AT A MINIMUM, BE IN ACCORDANCE WITH IBC AND NEC REQUIREMENTS FOR DWELLING UNITS. PLANS ARE FOR GENERAL ARRANGEMENT ONLY.

## ELECTRICAL SYMBOL LEGEND

	DEDICATED HOMERUN TO PANEL. CONDUIT RUN CONCEALED IN WALLS OR ABOVE CEILING
	JUNCTION BOX, CEILING MOUNTED
	JUNCTION BOX WALL MOUNTED AT HEIGHT INDICATED ON DRAWINGS.
	SINGLE POLE SWITCH, 20A, 120/277 VOLT, +48" A.F.F. TO CENTER.
	LUTRON DUAL TECHNOLOGY WALL SWITCH OCCUPANCY SENSOR.
	SOUND SYSTEM VOLUME CONTROL.
	SINGLE POLE MOTOR-RATED SWITCH, 20A, 120/277 VOLT, +48" A.F.F. TO CENTER.
	SINGLE POLE FAN SWITCH, 20A, 120/277 VOLT, +48" A.F.F. TO CENTER.
	DOUBLE POLE SWITCH, 20A, 120/277 VOLT, +48" A.F.F. TO CENTER.
	3-WAY SWITCH, 20A, 120/277 VOLT, +48" A.F.F. TO CENTER.
	4-WAY SWITCH, 20A, 120/277 VOLT, +48" A.F.F. TO CENTER.
	DIMMER SWITCH OF APPROPRIATE TYPE FOR FIXTURE CHARACTERISTICS.
	DUPLEX RECEPTACLE, 15 AMP, 120 VOLT, FOR SINGLE RECEPTACLE ON A CIRCUIT, USE A 20A RECEPTACLE. "GFI" INDICATES GROUND FAULT PROTECTION "WP" INDICATES WEATHERPROOF "USB" INDICATES UNIVERSAL SERIAL BUS CHARGER
	CEILING MOUNTED DUPLEX RECEPTACLE, 15 AMP, 120 VOLT. FOR SINGLE RECEPTACLE ON A CIRCUIT, USE A 20A RECEPTACLE.
	DUPLEX GFI RECEPTACLE MOUNTED ABOVE COUNTER BACKSPASH OR AT HEIGHT INDICATED.
	DUPLEX RECEPTACLE MOUNTED ABOVE COUNTER BACKSPASH OR AT HEIGHT INDICATED.
	DUPLEX RECEPTACLE, AS ABOVE, IN FLUSH FLOOR BOX WITH COVER PLATE.
	QUAD RECEPTACLE, MOUNT AS INDICATED. INDICATES KITCHEN EQUIPMENT CONNECTION. SEE EQUIPMENT CONNECTION SCHEDULE SHEET FOR ELECTRICAL CONNECTION INFORMATION. TEXT INDICATES EQUIPMENT BEING SERVED BY CONNECTION AS IDENTIFIED ON KITCHEN DRAWINGS AND SPECIFICATIONS.
	208V-1Ø, 3ØA DRYER OUTLET OR 208V-1Ø, 50A RANGE/OVEN OUTLET.
	DUPLEX RECEPTACLE CONTROLLED BY SWITCH INDICATED. UPPER HALF OF RECEPTACLE IS SWITCHED. LOWER HALF OF RECEPTACLE IS UNSWITCHED.
	120 VOLT, SINGLE PHASE MOTOR.
	MANUAL MOTOR STARTER.
	HEAVY DUTY FUSIBLE DISCONNECT SWITCH, NUMBERS INDICATE FRAME/POLES/FUSING RATINGS. PROVIDE NEMA 1 ENCLOSURE INSIDE. PROVIDE PROVIDE NEMA 3R ENCLOSURE FOR ALL SWITCHES LOCATED OUTSIDE.
	PANELBOARD, SURFACE OR RECESS MOUNTED, SEE SCHEDULE FOR DETAILS.
	2' x 4' FLUORESCENT LIGHTING FIXTURE, SEE FIXTURE SCHEDULE FOR DETAILS.
	SURFACE MOUNTED FLUORESCENT STRIP, SEE FIXTURE SCHEDULE FOR DETAILS.
	1' x 4' FLUORESCENT LIGHTING FIXTURE, SEE FIXTURE SCHEDULE FOR DETAILS.
	WALL MOUNTED LIGHTING FIXTURE, SEE FIXTURE SCHEDULE FOR DETAILS.
	CEILING MOUNTED LIGHTING FIXTURE, SEE FIXTURE SCHEDULE FOR DETAILS.
	TELEPHONE/DATA OUTLET, MOUNT AS INDICATED, RUN SINGLE CAT 6 (DATA) CABLE TO NEAREST TEL. BOARD. SUBSCRIPT 'W' INDICATES WALL MOUNTED PHONE STATION AT 60" AFF. SUBSCRIPT 'P' INDICATES PAY PHONE
	CABLE T.V. OUTLET. EXTEND CABLE FROM OUTLET TO NEAREST CABLE BOARD.
	ELECTRIC PUSH BUTTON IN FLUSH OUTLET BOX WHEN SHOWN IN FINISHED WALLS. MOUNT 48-INCHES ABOVE FINISHED FLOOR UNLESS OTHERWISE INDICATED OR REQUIRED BY SITE CONDITIONS. PROVIDED BY DOOR OPERATED VENDOR.
	LOW FREQUENCY SMOKE DETECTOR CONNECTED TO NEAREST 120 VOLT CIRCUIT AND HAVE BATTERY BACK-UP. DO NOT CONNECT TO BUILDING FIRE ALARM PANEL. INTERCONNECT ALL SUITE DETECTORS TO ANNUNCIATE SIMULTANEOUSLY. PHOTOELECTRIC TYPE, LOW FREQUENCY 520HZ.
	FIRE ALARM SYSTEM CARBON MONOXIDE DETECTOR, CEILING MOUNTED.

## LIGHTING FIXTURE SCHEDULE

MARK	MANUFACTURER	CATALOG NUMBER	LAMP		MOUNTING	BALLAST		FIXTURE WATTS	NOTES
			NO.	TYPE		NO.	TYPE		
F	Per Owner	Owner selected Ceiling Fan/ W Light Kit		LED	SURFACE	1	ELEC		Owner Selected EC Installed
R	Per Owner	Owner selected Fixture		LED	SURFACE	1	ELEC		Owner Selected EC Installed
WS	Per Owner	Owner selected Exterior Wall Sconce		LED	Sconce	1	ELEC		Owner Selected EC Installed
V	Per Owner	Owner selected bathroom Vanity Light		LED	WALL	1	ELEC		Owner Selected EC Installed

### FIXTURE SCHEDULE NOTES:

- CATALOG NUMBERS AND MANUFACTURERS ARE TO INDICATE TYPE AND QUALITY OF FIXTURE DESIRED. SUBMIT CUTSHEETS OF ALTERNATE MANUFACTURERS FOR ARCHITECT AND OWNER APPROVAL PRIOR TO PURCHASE OF ANY FIXTURES.
- COORDINATE FIXTURE TRIM WITH CEILING TYPE (ACOUSTIC OR GYPSUM).
- ARCHITECT TO APPROVE ALL TRIM FINISHES.
- ALL EMERGENCY FIXTURES AND EXIT SIGNS SHALL BE PROVIDED WITH 90 MINUTE BACKUP.

## ELECTRICAL LIGHTING NOTES GENERAL

G1: 20A/120V BRANCH CIRCUITS EXCEEDING 100' IN LENGTH FROM PANEL TO FARTHEST DEVICE SHALL USE NO. 10 CONDUCTORS AND 3/4"C.

G2: ALL FEEDERS/BRANCH CIRCUIT WIRING SHALL BE NO. 12 AWG UNLESS NOTED OTHERWISE. WHERE CONDUCTOR AND RACEWAY SIZE ARE SHOWN AT HOMERUN, SIZE INDICATED SHALL BE USED FOR THE ENTIRE LENGTH OF CIRCUIT. EXCEPTION: FINAL CONNECTION TO DEVICES IN OUTLET BOXES SHALL NOT BE REQUIRED TO BE LARGER THAN NO. 12 AWG.

G3: OUTLET BOXES FOR DEVICES MOUNTED ON OPPOSITE SIDES OF FIRE RATED PARTITIONS SHALL NOT BE MOUNTED IN THE SAME WALL CAVITY. SEPARATE WALL PENETRATIONS BY MOUNTING ON OPPOSITE SIDES OF WALL STUDS OR OTHER VERTICAL STRUCTURAL MEMBER IN THE WALL.

G4: EXACT LOCATION OF ALL FLOOR-MOUNTED OUTLETS SHALL BE COORDINATED THE WITH THE ARCHITECT BEFORE ROUGH-IN.

G5: BEFORE COMMENCING WITH ANY ROUGH-IN, COORDINATE THE EXACT LOCATION AND MOUNTING HEIGHT OF ALL WALL MOUNTED DEVICES WITH THE ARCHITECTURAL INTERIOR ELEVATIONS, CASEWORK SHOP DRAWINGS, AND EXISTING CONDITIONS. IF ANY DISCREPANCIES AR DISCOVERED, NOTIFY THE ARCHITECT FOR FURTHER DIRECTION. MINOR ADJUSTMENTS IN DEVICE LOCATION, LE 5'-0" IN ANY DIRECTION SHALL BE DONE AT NO ADDITIONAL COST TO THE CONTRACT.

G6: WHERE DEVICES ARE REQUIRED TO BE IDENTIFIED EITHER BY THE PLANS OR THE SPECIFICATIONS, PROVIDE ENGRAVED PLATE WITH 1/8" HIGH BLACK LETTERS.

G7: RACEWAYS SHALL BE INSTALLED CONCEALED IN NEW WALL CONSTRUCTION, ABOVE CEILINGS, BELOW FLOOR, AND IN OTHER CAVITIES TO THE GREATEST EXTENT POSSIBLE. WHERE EXPOSED RACEWAYS MUST BE USED, LAYOUT RACEWAYS TO MINIMIZE THE NUMBER OF VERTICAL RUNS.

## LIGHTING:

L1: SEE ARCHITECTURAL REFLECTED CEILING PLAN FOR THE EXACT LOCATION OF ALL CEILING MOUNTED LIGHTING FIXTURES.

L2: EXIT LIGHTS SHALL NOT BE SWITCHED.

L3: EMERGENCY LIGHTING FIXTURES SHALL BE WIRED SO AS TO BE SWITCHED "ON/OFF" WITHOUT OPERATING THE EMERGENCY BALLAST.

L4: ALL EXIT & EMERGENCY LIGHTS SHALL BE CONNECTED TO AN UNSWITCHED LEG OF THE LOCAL LIGHTING BRANCH CIRCUIT. ASSOCIATED BOXES & CONDUIT (EVERY FIVE FEET MINIMUM) SHALL BE PAINTED RED.

L5: EXACT LOCATIONS OF LIGHTING FIXTURES IN MECHANICAL SPACES SHALL BE DETERMINED IN THE FIELD. FIXTURES SHALL NOT BE SUPPORTED FROM DUCT OR PIPING. PROVIDE CHAIN HANGERS WHERE FIXTURES CAN NOT BE MOUNTED DIRECTLY TO CEILING OR STRUCTURE.

L6: WHERE LIGHT SWITCH AND ABOVE COUNTER RECEPTACLES ARE INDICATED TO BE MOUNTED ADJACENT TO EACH OTHER, THE DEVICES SHALL BE MOUNTED AT THE SAME HEIGHT UNDER A COMMON DEVICE PLATE. EXCEPT IN THE CASE WHERE THE VOLTAGES ARE DIFFERENT, THEY SHALL BE MOUNTED IN DIFFERENT OUTLET BOXES.

L7: MOUNT SURFACE MOUNTED FIXTURES & UNDER CABINET FIXTURES TO UNDERSIDE OF SURFACE USING SPACERS TO PROVIDE 1/4" AIR GAP. HOLD FIXTURE 1/8" OFF WALL. FOR FIXTURES BELOW CABINETS, MAKE FLEXIBLE FINAL CONNECTIONS FROM JUNCTION BOX IN CEILING CAVITY ABOVE FIXTURES. DO NOT INSTALL OUTLET AT FIXTURE. ALL WIRING SHALL BE CONCEALED.

L8: PROVIDE A MECHANICALLY HELD LIGHTING CONTACTOR EQUAL TO ASCO SERIES 917 WITH TWO WIRE CONTROL ACCESSORY FOR CONTROLLING THE CIRCUITS INDICATED. CONTACTOR SHALL HAVE REQUIRED POLES FOR NUMBERS OF CIRCUITS SHOWN PLUS TWO SPARES. CIRCUITS SHALL BE "ENERGIZED" BY PHOTOCELL AND "DE-ENERGIZED" BY TIME CLOCK. TIME CLOCK SHALL BE SEVEN-DAY TYPE WITH RESERVE SPRING. PHOTOCELL SHALL BE MOUNTED IN A TWIST-LOCK RECEPTACLE ORIENTED IN A NORTHERLY DIRECTION & ADJUSTED TO AVOID THE INFLUENCE OF ARTIFICIAL LIGHT SOURCES. MOUNT THE CONTACTOR & TIMECLOCK ADJACENT TO THE PANEL WITH THE BOTTOM OF THE ENCLOSURE APPROXIMATELY 60" ABOVE THE FLOOR.

L9: PROVIDE INBOARD/OUTBOARD SWITCHING EVERYWHERE TWO SWITCHES ARE INDICATED FOR ONE SET OF FLUORESCENT FIXTURES. OUTBOARD LAMP(S) SHALL BE KEYPED FROM ONE SWITCH AND INBOARD LAMP(S) SHALL BE KEYPED FROM THE SECOND. THE SWITCH NEAREST THE DOOR SHALL BE ARRANGED TO KEY THE OUTBOARD LAMPS.

## ELECTRICAL ABBREVIATIONS

18"	DIMENSION INDICATES HEIGHT ABOVE FINISHED FLOOR AT WHICH CENTER OF DEVICE IS TO BE MOUNTED.
AFF	ABOVE FINISHED FLOOR
AFC	ABOVE FINISHED GRADE.
EC	ELECTRICAL CONTRACTOR
FPN	FUSE PER EQUIPMENT NAMEPLATE REQUIREMENTS.
GC	GENERAL CONTRACTOR
GFI	INDICATES RECEPTACLE TO HAVE GROUND FAULT PROTECTION.
MC	ELECTRICAL CONTRACTOR
PC	PLUMBING CONTRACTOR
WP	INDICATES DEVICE TO HAVE WEATHERPROOF COVER.
U.N.O.	UNLESS NOTED OTHERWISE
FACP	FIRE ALARM CONTROL PANEL
FAAN	FIRE ALARM ANNUNCIATOR PANEL
CH	COUNTER HEIGHT
NL	NIGHT LIGHT.

ALL DEVICES AND COVERPLATES SHALL BE IVORY IN COLOR.

## 2018 APPENDIX B BUILDING CODE SUMMARY FOR ALL COMMERCIAL PROJECTS ELECTRICAL DESIGN

### ELECTRICAL SUMMARY

#### ELECTRICAL SYSTEM AND EQUIPMENT

##### METHOD OF COMPLIANCE: 2018 NCECC

##### LIGHTING SCHEDULE (each fixture type)

SEE FIXTURE SCHEDULE LAMP TYPE REQUIRED IN FIXTURE

SEE FIXTURE SCHEDULE NUMBER OF LAMPS IN FIXTURE

SEE FIXTURE SCHEDULE BALLAST TYPE USED IN THE FIXTURE

SEE FIXTURE SCHEDULE NUMBER OF BALLAST IN FIXTURE

SEE FIXTURE SCHEDULE TOTAL WATTAGE PER FIXTURE

XX VS. XX W/SF TOTAL INTERIOR WATT SPECIFIED VS. ALLOWED

XX VS. XX W/SF TOTAL EXTERIOR WATT SPECIFIED VS. ALLOWED

##### ADDITIONAL EFFICIENCY PACKAGE OPTIONS

- C406.2 MORE EFFICIENT MECHANICAL EQUIPMENT
- C406.3 REDUCED LIGHTING POWER DENSITY
- C406.4 ENHANCED DIGITAL LIGHTING CONTROLS
- C406.5 ON-SITE RENEWABLE ENERGY
- C406.6 DEDICATED OUTDOOR AIR SYSTEM
- C406.7 REDUCED ENERGY USE IN SERVICE WATER HEATING

##### DESIGNER STATEMENT:

TO THE BEST OF MY KNOWLEDGE AND BELIEF, THE DESIGN OF THIS BUILDING COMPLIES WITH THE ELECTRICAL SYSTEM AND EQUIPMENT REQUIREMENTS OF THE ENERGY CODE.





# DEL VESCOVO DESIGN GROUP

ARCHITECTURE & INTERIOR DESIGN

451 North Orange Avenue, Sarasota, FL 34236  
Tel: 941.321.9507  
Email: Timothy@DelDesign.com  
url: www.DelDesign.com  
FLORIDA LICENSE: AA-26002369

PROJECT  
TENANT INFILL  
**BROADWAY PLACE**  
3831 BROADWAY  
FORT MYERS, FL 33901

OWNER:  
PROJECT NUMBER: 22-43

## APPROVAL

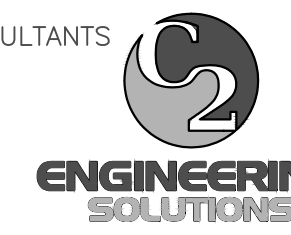
SIGN AND DATE BELOW FOR APPROVAL TO  
MOVE FROM [ CONSTRUCTION DOCUMENT ] PHASE  
TO [ CONSTRUCTION ADMINISTRATION ] PHASE

Date

Approval Signature

Printed Name

CONSULTANTS



**ENGINEERING  
SOLUTIONS**  
1726 EAST 7TH AVE, SUITE 4  
TAMPA, FL 33605  
813.291.7094

TO THE BEST OF MY KNOWLEDGE, THESE PLANS AND  
SPECIFICATIONS ARE COMPLETE AND COMPLY WITH THE  
2020 IBC 7TH EDITION FOR BUILDING, PLUMBING,  
MECHANICAL, AND NEC 2017, 2020 7TH EDITION FLORIDA  
FIRE PREVENTION CODE, 2018 NFPA 1, 2018 NFPA 101,  
2016 NFPA 13 13R 13D, 2016 NFPA 72, 2017 NFPA 70

DRAWINGS

**CONSTRUCTION  
DOCUMENT**

Revisions  
No. Date Description

SCALE  
AS NOTED

DRAWN BY

CHECKED BY

PERMIT SUBMISSION PLOT DATE  
January 27, 2023

SHEET TITLE  
**ELECTRICAL  
FLOOR PLANS  
LIGHTING AND POWER**

SEAL

SHEET NUMBER

# E2

TIMOTHY A. DEL VESCOVO  
FLORIDA LICENSE: ID-5344

© Copyright Del Vescovo Design Group, Inc. All Rights Reserved 2022

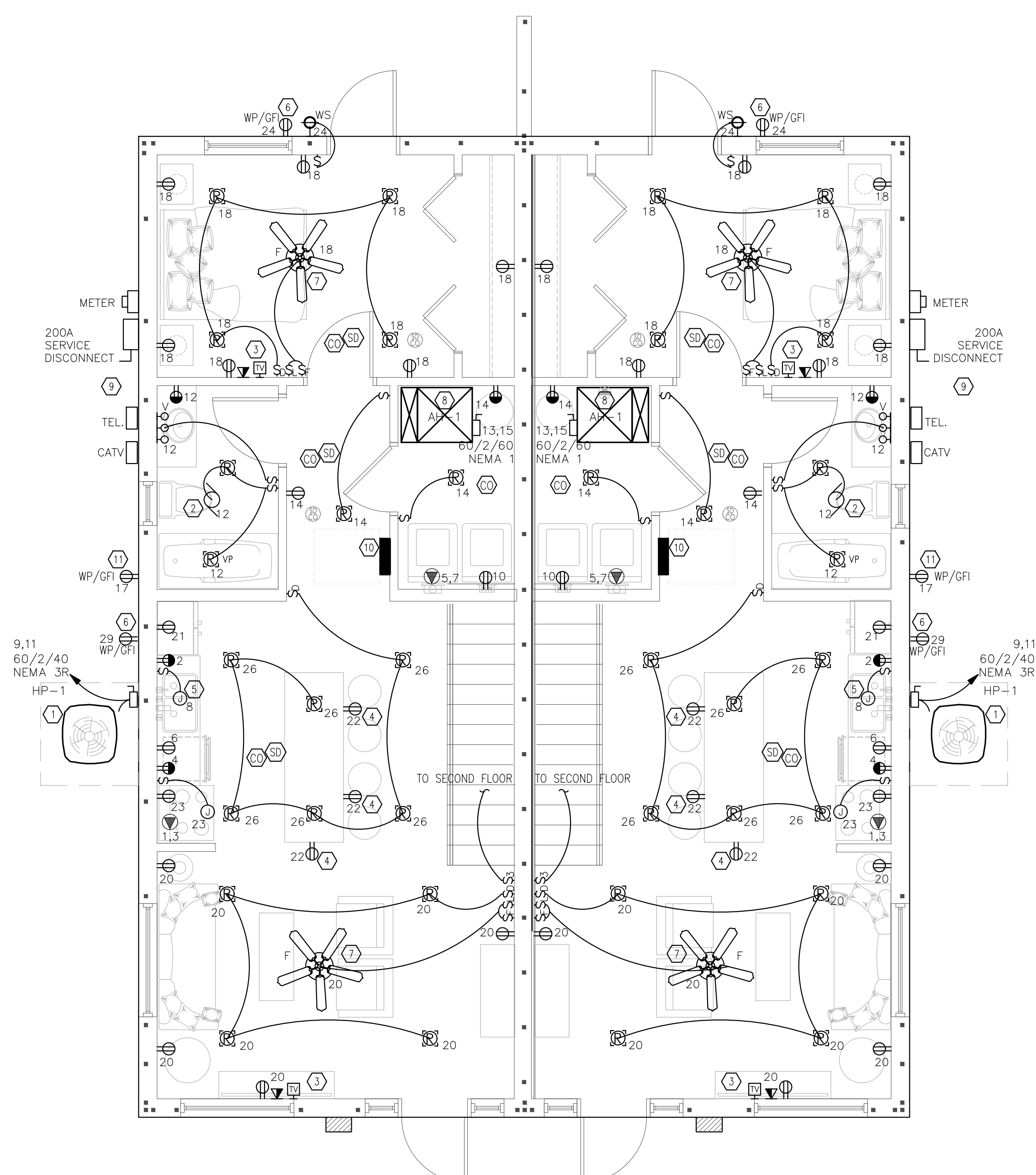
### KEYED NOTES:

- ① COORDINATE EXACT LOCATION OF MECHANICAL UNITS IN THE FIELD AND WITH MECHANICAL PLANS.
- ② COORDINATE EXACT LOCATION OF THE EXHAUST FAN IN THE FIELD AND WITH MECHANICAL PLANS.
- ③ COORDINATE EXACT LOCATION AND MOUNTING HEIGHT OF THE TV OUTLET, CAT6 DATA OUTLET AND POWER OUTLET WITH OWNER/ARCHITECT/LOW VOLTAGE CONSULTANT.
- ④ OUTLET MOUNTED NO MORE THAN 12" BELOW COUNTERTOP. E.C. SHALL COORDINATE WITH COUNTER INSTALLER TO ENSURE THAT COUNTERTOP DOES NOT EXTEND MORE THAN 6" FROM BASE SUPPORT.
- ⑤ PROVIDE SPST TOGGLE SWITCH FOR CONNECTION OF GARBAGE DISPOSAL AND DISPOSAL. CONNECT USING 2#12, 1#12G, IN 1/2"C., COORDINATE EXACT LOCATION, MOUNTING HEIGHT AND TERMINATION WITH PLUMBING CONTRACTOR PRIOR TO ROUGH-IN.
- ⑥ COORDINATE MOUNTING HEIGHT OF RECEPTACLE WITH FLOOD PLAIN & LOCAL JURISDICTION REQUIREMENTS.

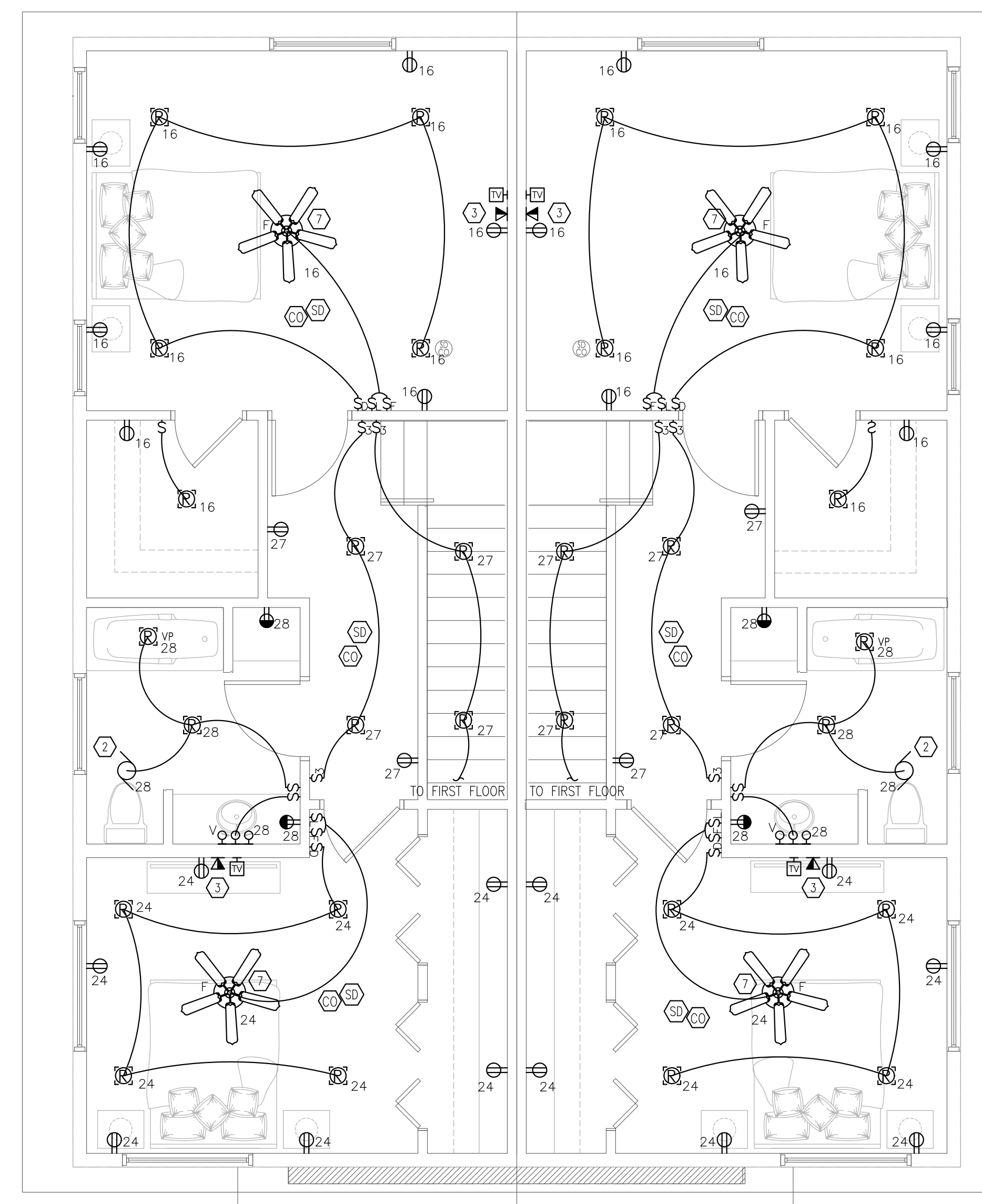
- ⑦ PROVIDE COMBINATION FAN/LIGHT KIT. OUTLET BOX FLUSH MOUNTED IN CEILING FOR INSTALLATION OF CEILING FAN. PROVIDE BLANK COVERPLATE FOR OUTLET BOX. CONNECT AS INDICATED.
- ⑧ COORDINATE INSTALLATION WITH THE MECHANICAL CONTRACTOR PRIOR TO ROUGH-IN.
- ⑨ ELECTRICAL SERVICE IS GROUPED AT THIS LOCATION.
- ⑩ THERE SHALL BE NO SHELVING PLACED IN FRONT, ABOVE OR BELOW PANELBOARD "A". NEC PANELBOARD REQUIRED CLEARANCES SHALL BE MAINTAINED. SEE ARCHITECTURAL PLANS FOR ADDITIONAL INFORMATION.
- ⑪ COORDINATE EXACT LOCATION OF WATER HEATER WITH PLUMBING PLANS.

### GENERAL NOTES:

- 1. ELECTRICAL DEVICES, RECEPTACLES AND SWITCHES SHALL BE NYLON AND HAVE A WHITE FINISH. COVERPLATES SHALL BE NYLON WITH A WHITE FINISH.
- 2. ALL DEVICES SHALL BE COMMERCIAL GRADE.
- 3. COORDINATE LUMINAIRE TYPES WITH LUMINAIRE SCHEDULE OUTLINED IN THE SPECIFICATIONS.
- 4. OUTLET BOXES FOR DEVICES MOUNTED ON OPPOSITE SIDES OF A FIRE RATED PARTITIONS, SHALL NOT BE MOUNTED IN THE SAME WALL CAVITY. SEPARATE WALL PENETRATIONS BY MOUNTING ON OPPOSITE OF WALL STUDS OR OTHER VERTICAL STRUCTURAL MEMBER IN THE WALL.
- 5. A.D.A. AND HEARING IMPAIRED.
  - a. INSTALL A 177CD CEILING MOUNTED FIRE ALARM STROBE IN ROOM.
  - b. INSTALL A FIRE ALARM STROBE IN THE BATHROOM.
  - c. INSTALL FIRE ALARM SYSTEM PHOTOELECTRIC SMOKE DETECTOR WITH SOUNDER BASE WITHIN 20' OF WALLS.
  - d. PROVIDE AUDIBLE/VISUAL DOORBELL/ ANNUNCIATOR EQUIVALENT TO EDWARDS MODEL 7005-65 WITH EDWARDS MODEL 620 PUSHBUTTON
- 6. RECEPTACLES SHALL BE ARC FAULT PROTECTED AND TAMPER PROOF PER NEC 210.12(A) AND NEC 406.12.
  - a. 120 VOLT, 15 AND 20 AMP RECEPTACLES IN DWELLING UNITS SHALL BE TAMPER RESISTANT PER NEC 2020, SECTION 406.12
  - b. 120 VOLT, 15 AND 20 AMP BRANCH CIRCUITS SERVING DWELLING UNITS SHALL BE PROTECTED BY 15 OR 20 AMP ARC FAULT TYPE CIRCUIT BREAKER PER NEC 2020, SECTION 406.12.
- 7. PROVIDE FIRE-RATED(TITE) OUTLET BOXES AND FIRE STOPPING MATERIAL AS REQUIRED AT THE ONE HOUR RATED WALL BETWEEN UNITS AND AT THE SECOND FLOOR RATED CEILING.



1 ELECTRICAL PLANS - FIRST FLOOR  
E2 1/4" = 1'-0"



2 ELECTRICAL PLANS - SECOND FLOOR  
E2 1/4" = 1'-0"





# DEL VESCOVO DESIGN GROUP

ARCHITECTURE & INTERIOR DESIGN  
451 North Orange Avenue, Sarasota, FL 34236  
Tel: 941.321.9507  
email: Timothy@DelDesign.com  
url: www.DelDesign.com  
FLORIDA LICENSE: AA-26002369

PROJECT  
TENANT INFILL  
**BROADWAY PLACE**  
3831 BROADWAY  
FORT MYERS, FL 33901

OWNER:  
PROJECT NUMBER: 22-43

## APPROVAL

SIGN AND DATE BELOW FOR APPROVAL TO  
MOVE FROM [ CONSTRUCTION DOCUMENT ] PHASE  
TO [ CONSTRUCTION ADMINISTRATION ] PHASE

Date

Approval Signature

Printed Name

CONSULTANTS



**1726 EAST 7TH AVE, SUITE 4  
TAMPA, FL 33605  
813.291.7094**

TO THE BEST OF MY KNOWLEDGE, THESE PLANS AND  
SPECIFICATIONS ARE COMPLETE AND COMPLY WITH THE  
2020 IBC 7TH EDITION FOR BUILDING, PLUMBING,  
MECHANICAL AND NEC 2017, 2020 7TH EDITION FLORIDA  
FIRE PREVENTION CODE, 2018 NFPA 1, 2018 NFPA 101,  
2016 NFPA 13 13R 13D, 2016 NFPA 72, 2017 NFPA 70

DRAWINGS

## CONSTRUCTION DOCUMENT

Revisions  
No. Date Description

SCALE  
AS NOTED

DRAWN BY

CHECKED BY

PERMIT SUBMISSION PLOT DATE  
January 27, 2023

## SHEET TITLE ELECTRICAL RISER DIAGRAM AND DETAILS

SEAL SHEET NUMBER

# E3

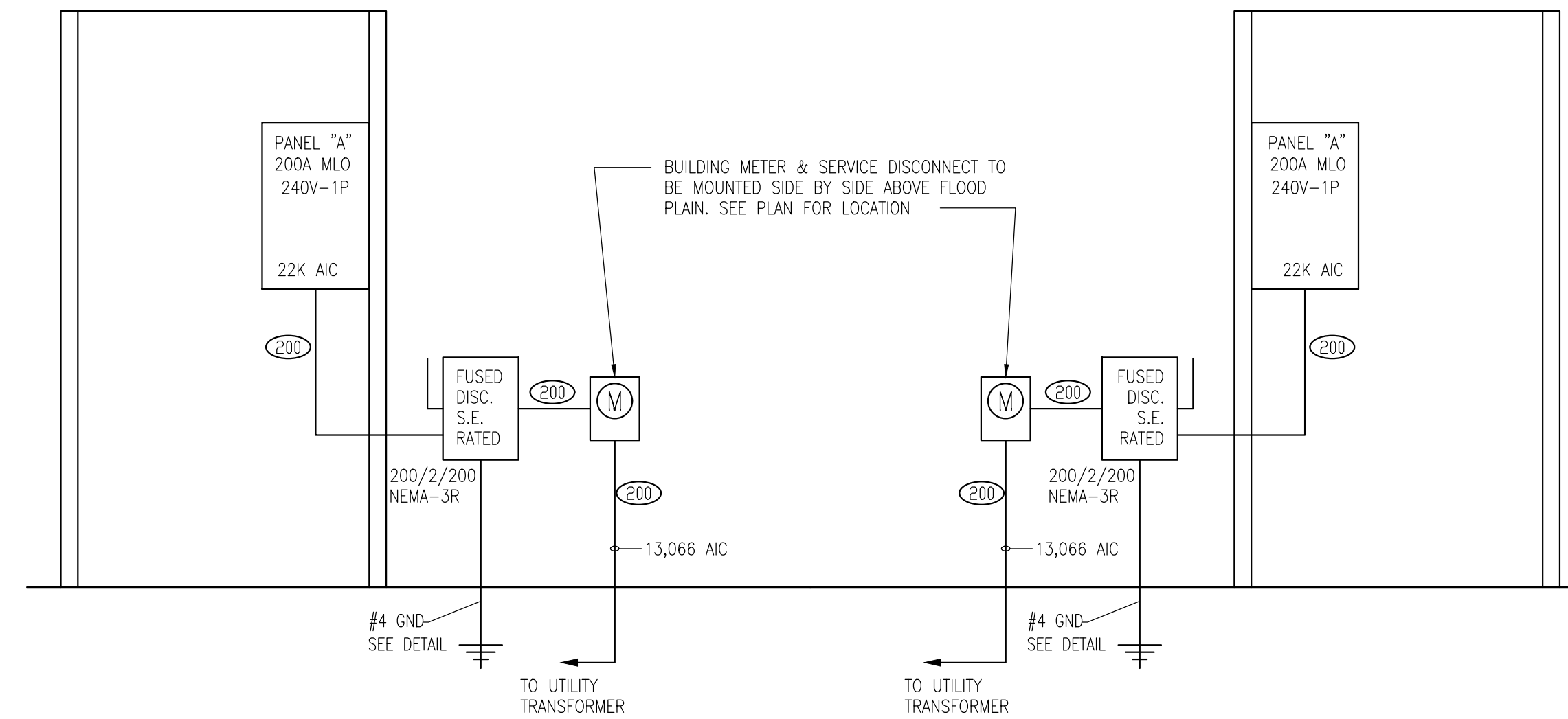
TIMOTHY A. DEL VESCOVO  
FLORIDA LICENSE: ID-5344

© Copyright Del Vescovo Design Group, Inc. All Rights Reserved 2022

FEEDER SCHEDULE			
STD. FUSE OR C/B TRIP SIZE	# OF SETS	BUILDING WIRE - QUANTITY & SIZE TYPE THHN - DRY, THWN - WET EQUIPMENT GROUND	EMT
30	1	4 #10, #10 G	1/2"
35	1	4 #8, #10 G	3/4"
40	1	4 #8, #10 G	3/4"
45	1	4 #6, #10 G	1"
50	1	4 #6, #10 G	1"
60	1	4 #6, #10 G	1"
70	1	4 #4, #8 G	1 1/4"
80	1	4 #3, #8 G	1 1/4"
90	1	4 #2, #8 G	1 1/4"
100	1	4 #2, #8 G	1 1/4"
110	1	4 #1, #6 G	1 1/2"
125	1	4 #1/0, #6 G	2"
150	1	4 #1/0, #6 G	2"
175	1	4 #2/0, #6 G	2"
200	1	4 #3/0, #6 G	2"
225	1	4 #4/0, #4 G	2 1/2"
250	1	4 - 250MCM, #4 G	2 1/2"
300	1	4 - 350MCM, #4 G	3"
350	2	4 #2/0, #3 G	2"
400	2	4 #3/0, #2 G	2"
450	2	4 #4/0, #2 G	2 1/2"
500	2	4 - 250MCM, #2 G	2 1/2"
600	2	4 - 350MCM, #1 G	3"
700	2	4 - 500MCM, #1/0 G	3 1/2"
800	2	4 - 500MCM, #1/0 G	3"
1000	3	4 - 400MCM, #2/0 G	3"
1200	4	4 - 350MCM, #3/0 G	3"
1600	5	4 - 400MCM, #4/0 G	3"

**NOTES:**

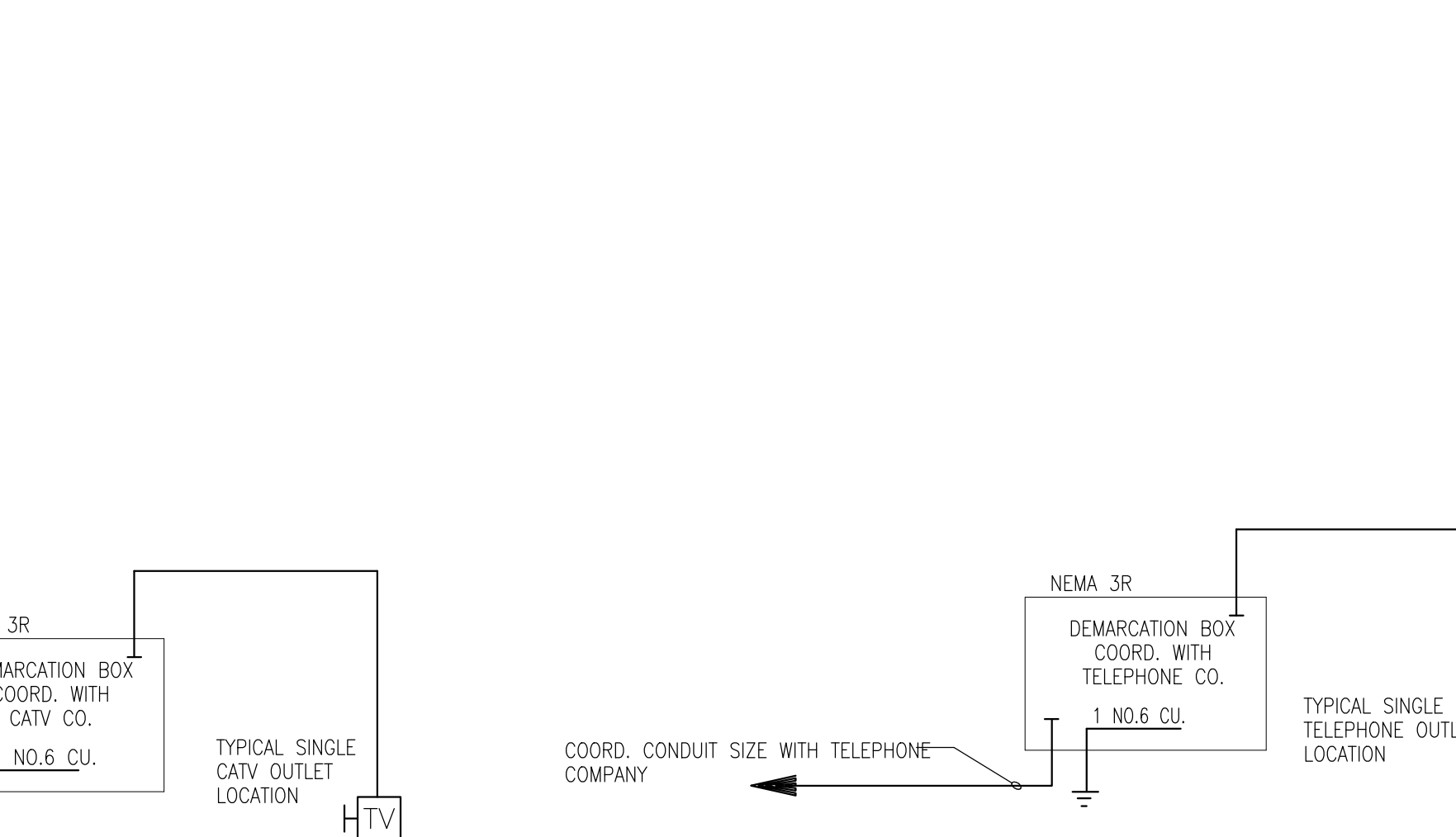
- ALL FEEDER SIZES LISTED MAY NOT BE USED IN PROJECT RISER DIAGRAM.
- ELECTRICAL CONTRACTOR TO VERIFY CONDUIT SIZE REQUIRED IF WIRE TYPES OTHER THAN THOSE LISTED ABOVE ARE USED. REFER TO SPECIFICATION SECTION 16110 AND LATEST EDITION OF NFPA 70 FOR CONDUIT TYPES REQUIRED PER LOCATION OF USE.
- IF CONDUIT OTHER THAN "EMT" IS REQUIRED BASE BID ON NEXT TRADE SIZE ABOVE THAT INDICATED.
- FEEDER SIZES SHOWN IN PROJECT RISER WITH A DELTA SYMBOL Δ 3 WIRE FEEDERS, A NEUTRAL WIRE IS NOT REQUIRED.



1 NEW ELECTRICAL RISER  
E3 NO SCALE

UNIT LOAD CENTER										A						
VOLTAGE	PHASE	WIRE	MCB (A)	MLO (A)	AIC	MOUNTING	MANUFAC.	MDL #	DWG REF							
120/240	1	3	200	0	22K	RECESSED	-	-	-							
TYPE LEGEND										REMARKS						
L	LIGHTING	K	KITCHEN EQ	PROVIDE EQUIPMENT GROUND BUS												
R	RECEPTACLES	E	EXISTING	PROVIDE FEED THRU AND/OR SUB FEED LUGS FOR MULTI-SECTION PANEL												
M	MECH EQUIP	O	OTHER													
CKT. #	ITEM SERVED	TYPE	WIRE	CONDUIT	TRIP	P	LOAD (VA)	PHASE	LOAD (VA)	TRIP	CONDUIT	WIRE	TYPE	ITEM SERVED	CKT. #	
1	RANGE	K	#6	1"	50A	2	4000	A	1500	1	20A	3/4"	#12	R	SMALL APPLIANCE	2
3	-	-	-	-	-	-	4000	B	1500	1	20A	3/4"	#12	R	SMALL APPLIANCE	4
5	DRYER	M	#10	3/4"	30A	2	2500	A	1100	1	20A	3/4"	#12	K	DISHWASHER	6
7	-	-	-	-	-	-	2500	B	1000	1	20A	3/4"	#12	K	DISPOSAL	8
9	HP-1	M	#8	3/4"	40A	2	2500	A	1500	1	20A	3/4"	#12	M	WASHER	10
11	-	-	-	-	-	-	2500	B	1000	1	20A	3/4"	#12	R	BATH RECEPTACLES	12
13	AHU-1	M	#4	1"	60A	2	5000	A	1000	1	20A	3/4"	#12	R	RECEPT/LIGHTS	14
15	-	-	-	-	-	-	5000	B	1444	1	15A	3/4"	#14	R	RECEPT/LIGHTS	16
17	WATER HEATER	M	#12	3/4"	20A	1	1200	A	1444	1	15A	3/4"	#14	R	RECEPT/LIGHTS	18
19	SPARE	-	-	-	-	-	20A	1	1100	1	15A	3/4"	#14	R	RECEPT/LIGHTS	20
21	REFRIGERATOR	K	#12	3/4"	20A	1	1000	A	1000	1	15A	3/4"	#14	R	RECEPT/LIGHTS	22
23	MICRO/RECIRC	K	#12	3/4"	20A	1	1500	B	1444	1	15A	3/4"	#14	R	RECEPT/LIGHTS	24
25	SPARE	-	-	-	-	-	20A	1	500	1	15A	3/4"	#14	R	KITCHEN LIGHTS	26
27	2F RECEPTACLE	R	#14	3/4"	15A	1	500	B	1000	1	20A	3/4"	#12	R	BATH RECEPTACLES	28
29	EXTERIOR RECEPTACLE	R	#14	3/4"	15A	1	500	A	1	20A					SPARE	30
31	SPARE	-	-	-	-	-	20A	1							SPARE	32
33	SPACE ONLY	-	-	-	-	-									SPACE ONLY	34
35	SPACE ONLY	-	-	-	-	-									SPACE ONLY	36
37	SPACE ONLY	-	-	-	-	-									SPACE ONLY	38
39	SPACE ONLY	-	-	-	-	-									SPACE ONLY	40
41	SPACE ONLY	-	-	-	-	-									SPACE ONLY	42
					A	B	TOTAL					GFI - PROVIDE GFCI BREAKER FOR CIRCUIT. ARC - PROVIDE ARC FAULT BREAKER FOR CIRCUIT.				
CONNECTED LOAD (VA)					24744	24488	49232									

DWELLING UNIT OPTIONAL CALCULATION (NEC 220.82)			
UNIT TYPE:	A		
SYSTEM VOLTAGE:	120 / 240		
SERVICE SIZE:	200 AMPS		
SQUARE FEET:	2251		
GENERAL LIGHTING & RECEPTACLES (3VA * SQ. FT.):	6753 VA	SUBTOTAL KVA:	35.353 KVA
SMALL APPLIANCE (1.5KVA PER CIRCUIT):	QTY: 2 3000 VA		
LAUNDRY CIRCUIT (1.5KVA PER CIRCUIT):	QTY: 1 1500 VA	1ST 10KVA @ 100	10 KVA
RANGE (8KVA MIN. OR NAMEPLATE):	8000 VA	1ST 10KVA @ 40%	10.1412 KVA
WATER HEATER (NAMEPLATE RATING):	4500 VA	HVAC:	15 KVA
WASHER (NAMEPLATE RATING):	1500 VA		
DRYER (NAMEPLATE RATING):	5000 VA	TOTAL DEMAND:	35.1412 KVA
DISHWASHER (NAMEPLATE RATING):	1400 VA	TOTAL AMPS:	146.4 A
DISPOSAL (NAMEPLATE RATING):	800 VA		
REFRIGERATOR (NAMEPLATE RATING):	1400 VA		
MICROWAVE (NAMEPLATE RATING):	1500 VA		
	VA		



NOTE:  
PROVIDE 3/4" C. UP TO ABOVE HUNG CEILING AND IN ALL INACCESSIBLE LOCATIONS.

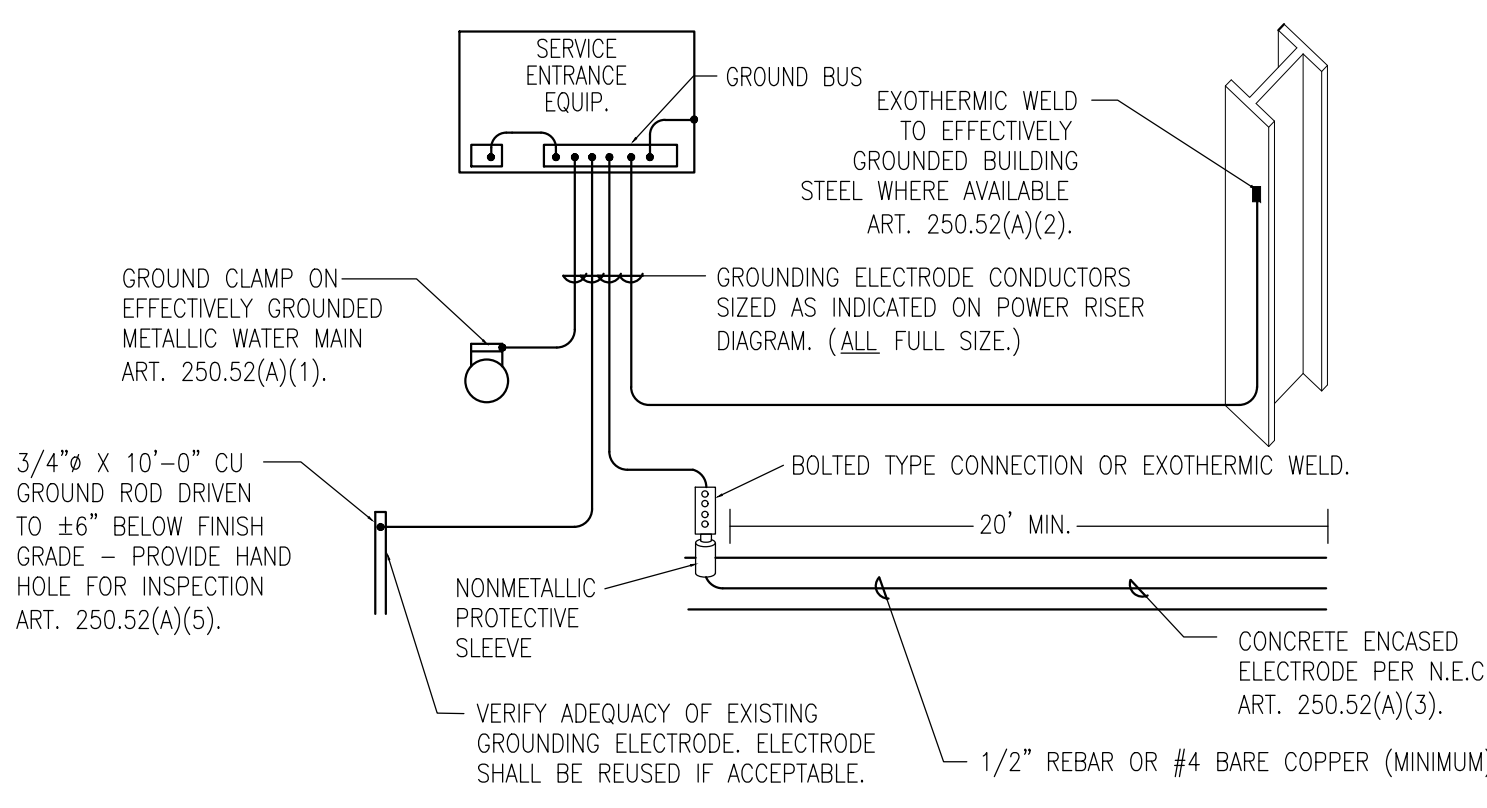
### CATV RISER NOTES

- PROVIDE RESIDENTIAL STYLE COAX CABLE BETWEEN ALL CATV OUTLETS IN A TYPICAL UNIT. PROVIDE 1 PRIMARY CATV LINE BACK TO CATV BOARD IN THAT AREA.
- INSTALL ONE 2" CONDUIT SLEEVE FOR CATV CABLES. ALL CATV CABLES SHALL BE ROUTED THROUGH THIS SLEEVE AND TO ITS FLOORS DESIGNATED CATV BOARD.

NOTE:  
PROVIDE 3/4" C. UP TO ABOVE HUNG CEILING AND IN ALL INACCESSIBLE LOCATIONS.

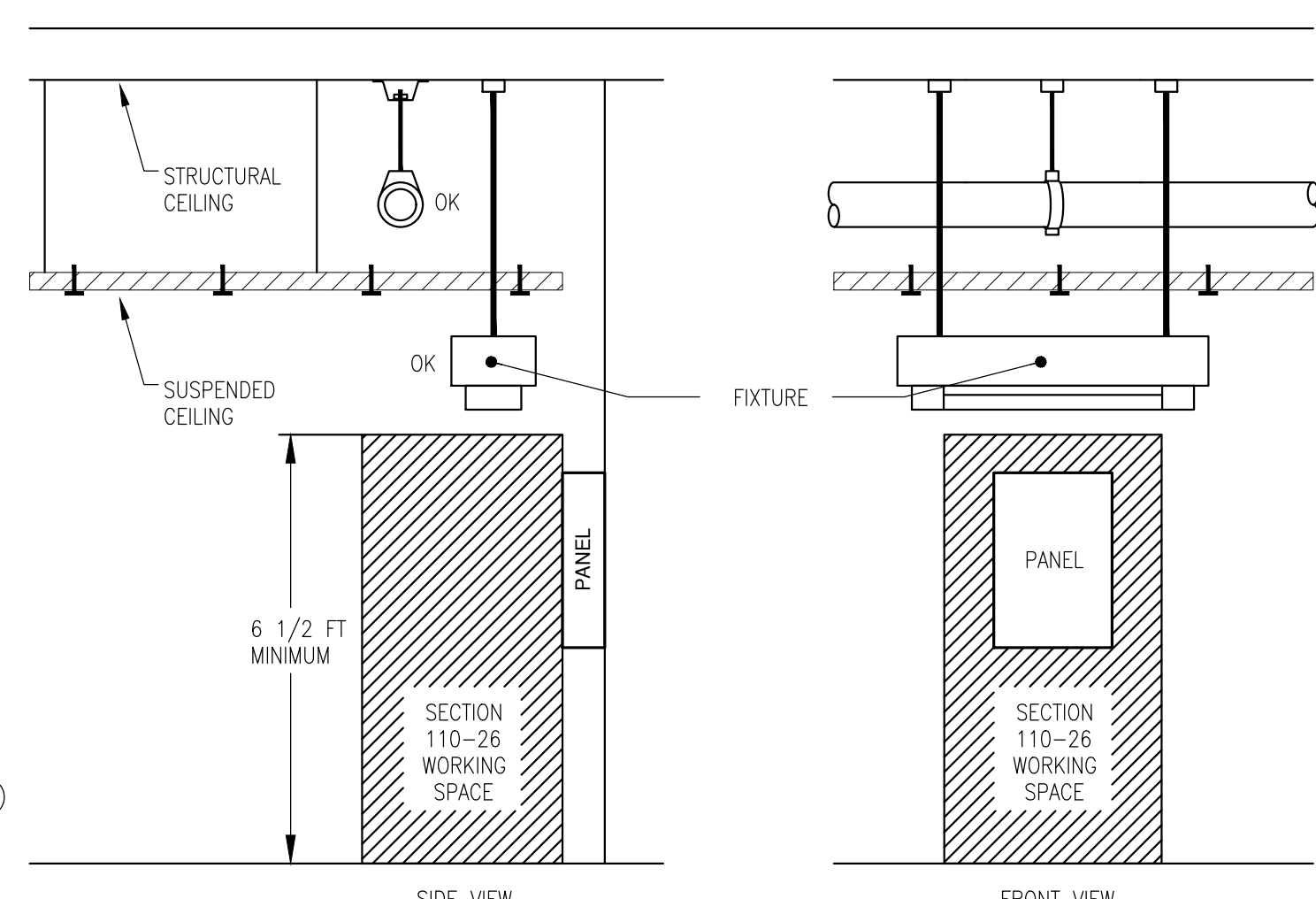
### TELEPHONE RISER NOTES

- PROVIDE DUPLEX RECEPTACLE ON A DEDICATED CIRCUIT FOR TELEPHONE AND OTHER COMMUNICATION EQUIPMENT.
- PROVIDE CAT SE CABLE BETWEEN ALL TELEPHONE OUTLETS IN A TYPICAL UNIT. PROVIDE 1 PRIMARY TELEPHONE LINE BACK TO TELEPHONE BOARD IN THAT AREA.



### 2 GROUNDING DETAIL

E3 N.T.S.  
GROUNDING ELECTRODES SHALL BE PROVIDED IN ACCORDANCE WITH NEC 250 (C).



### 3 WORKING CLEARANCE FOR ELECTRICAL EQUIPMENT

E3 N.E.C. ARTICLE 110-26

### 4 CATV RISER DIAGRAM

E3 NTS

### 5 TELEPHONE RISER DIAGRAM

E3 NTS