

Appendix- A

1915 SE Van Loon Terr.

Cape Coral Fl. 33990

1915 SE Van Loon Terrace, Cape Coral, Lee County
Hardening of Buildings

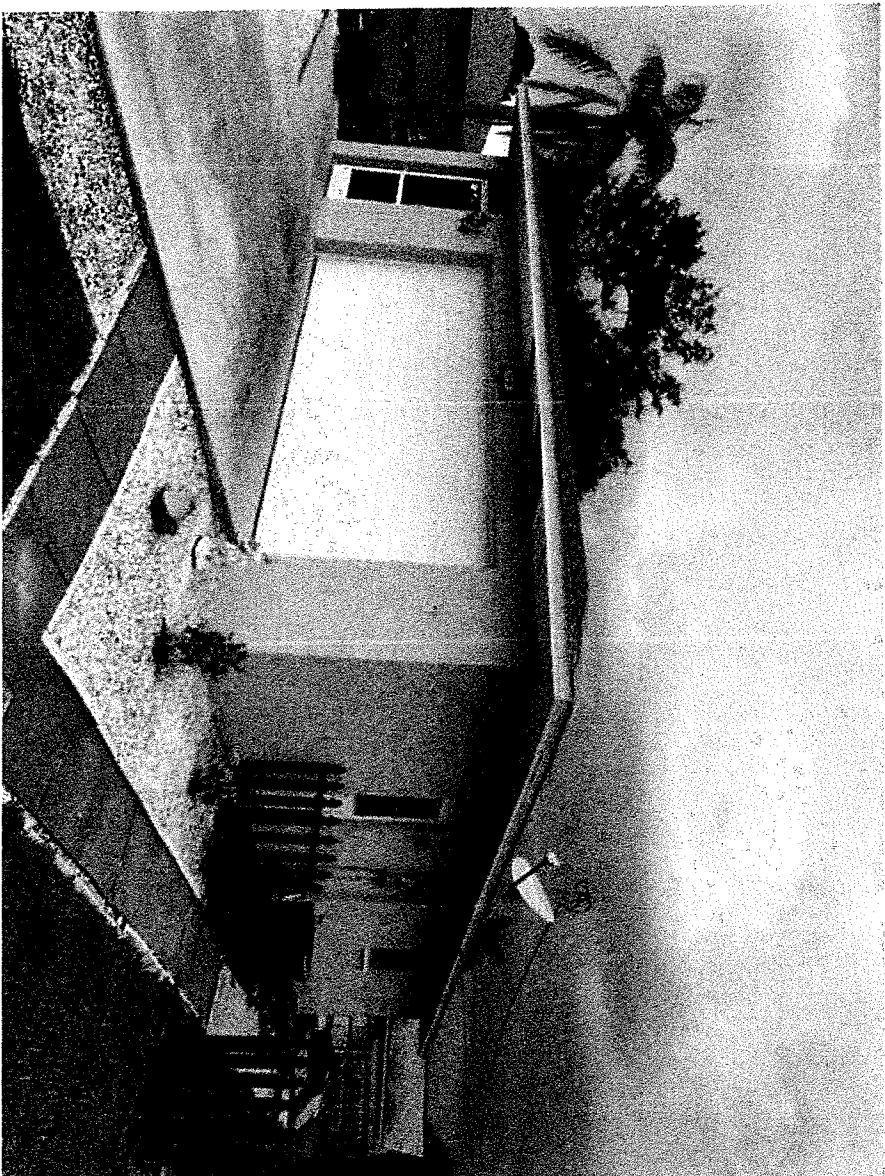
Location Name	1915 SE Van Loon Terr
City	Cape Coral
ST	FL
ZIP	33990
Address	1915 SE Van Loon Terr, Cape Coral FL 33990
County	Lee
Orig Year Built	1985
Deed Owner	Community Assisted and Supported Living, Inc.
Acquisition Date	10/7/2021
Parcel Num	<u>10166421</u>
STRAP	17-44-24-C1-01351.0150
Bed Rm	3
Bath	2
Sq. Ft. A/C	1,347
Permitting City/Cnty	Cape Coral
Construction	
Description2	Joisted Masonry
Roof Frame/Roof Deck	108-Wood Frame
Shape of Roof	107-Gable roof med slope (10 deg to 26.5 deg)
Type of Roof Covering	113-Shingle rated for high wind speeds (≥ 110 mph)
Predominant Exterior Wall / Cladding	106-Reinforced Masonry
2023 Hardening Assesment	<u>Report</u>
Images	<u>Images</u>
Deed	<u>Deed</u>



HOVER

Complete Measurements

1915 Southeast Van Loon Terrace,...
CAPE CORAL, FL 33990



VIEW 3D MODEL

© 2023 HOVER Inc. All rights reserved. This document and the images, measurement data, format and contents are the exclusive property of HOVER. HOVER is the registered trademark of Hover Inc. All other brands, products and company names mentioned herein may be trademarks or registered trademarks of their respective holders.

Use of this document is subject to HOVER's Terms of Use and is provided "as is." HOVER makes no guarantees, representations or warranties of any kind, express or implied, arising by law or otherwise relating to this document or its contents or use, including but not limited to, quality, accuracy, completeness, reliability, or fitness for a particular purpose.

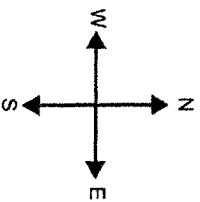
PROPERTY ID: 9749124
CASL LEE COUNTY
19 JUL 2023



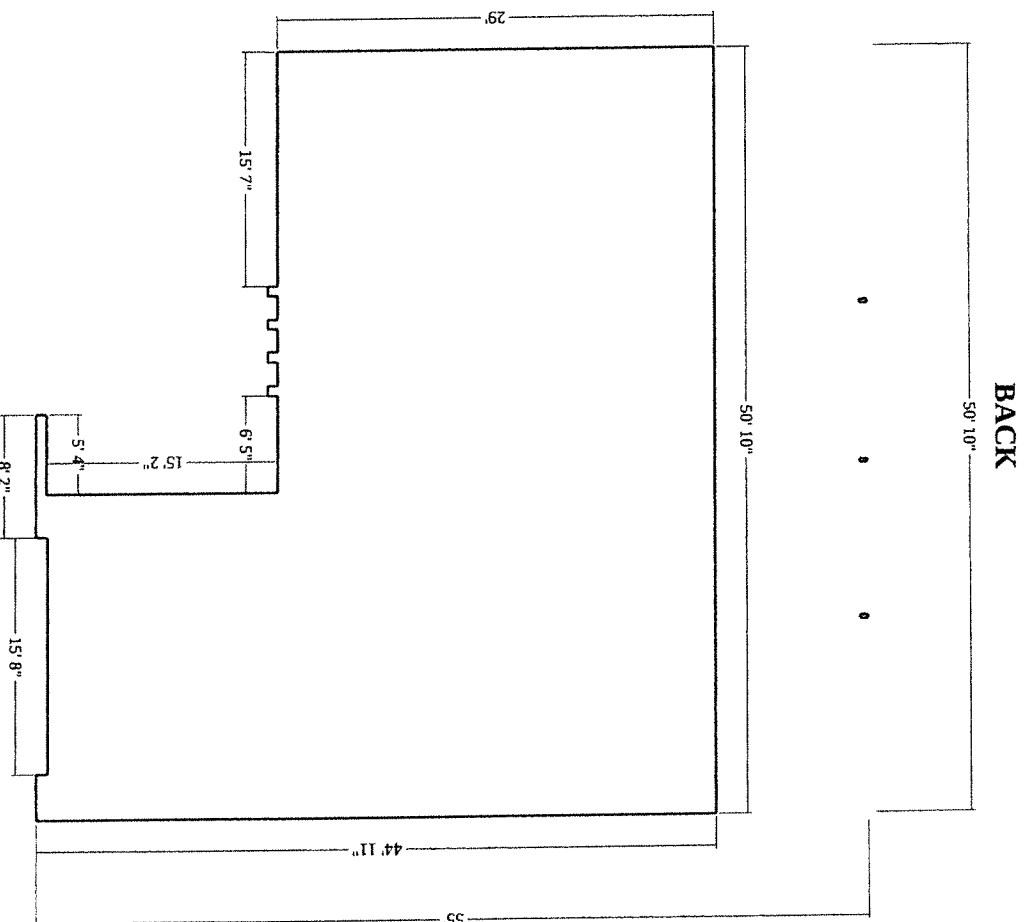
HOVER

Complete Measurements

1915 Southeast Van Loon Terrace, ... FOOTPRINT



Number of Stories: 1
Footprint Perimeter: 213' 2"
Footprint Area: 1810 ft²





HOVER

Complete Measurements

1915 Southeast Van Loon Terrace,
SOFIT

Soffit Breakdown

num	Type	Depth	Length	Area	Pitch
1	eave	86"	14' 6"	104 ft²	4 / 12
2	eave	22"	8"	1 ft²	4 / 12
3	eave	18"	1' 6"	2 ft²	4 / 12
4	eave	8"	1' 7"	1 ft²	4 / 12
5	eave	18"	8"	1 ft²	4 / 12
6	eave	25"	1' 7"	3 ft²	4 / 12
7	eave	18"	7"	1 ft²	4 / 12
8	eave	25"	1' 7"	3 ft²	4 / 12
9	eave	18"	7"	1 ft²	4 / 12
10	eave	25"	15' 7"	33 ft²	4 / 12
11	eave	25"	33' 3"	70 ft²	4 / 12
12	eave	25"	14' 8"	31 ft²	4 / 12
13	eave	147"	25' 4"	310 ft²	4 / 12
14	eave	25"	12' 9"	27 ft²	4 / 12
15	eave	25"	46' 11"	96 ft²	4 / 12
16	eave	24"	28' 9"	58 ft²	4 / 12
17	eave	77"	8"	4 ft²	4 / 12

Feature is too small to label on the plan diagram

Powered by HOVER

© 2023 HOVER Inc. All rights reserved. This document and the images, measurement data, format and contents are the exclusive property of HOVER. HOVER is the registered trademark of Hover Inc. All other brands, products and company names mentioned herein may be trademarks or registered trademarks of their respective holders.
Use of this document is subject to HOVER's Terms of Use and is provided "as is." HOVER makes no guarantees, representations or warranties of any kind, express or implied, arising by law or otherwise relating to this document or its contents or use, including but not limited to, quality, accuracy, completeness, reliability, or fitness for a particular purpose.

PROPERTY ID: 9749124

CASL LEE COUNTY

19 JUL 2023

Page 7



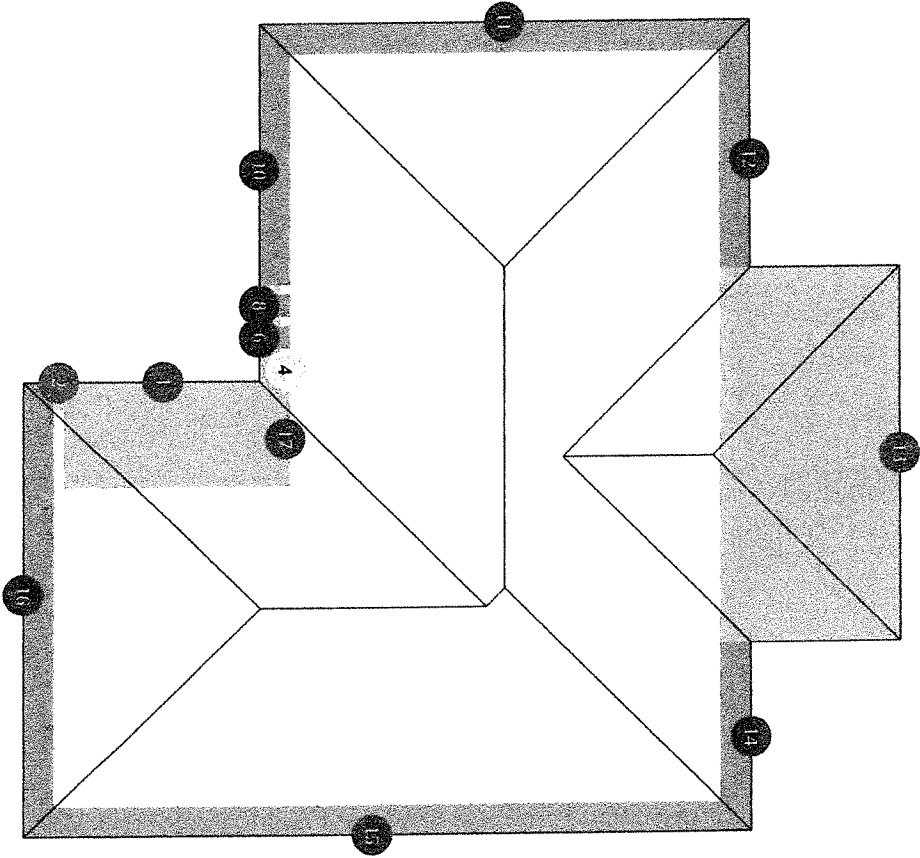
HOVER

Complete Measurements

1915 Southeast Van Loon Terrace,...
SOFFIT

Soffit Summary

Depth	Type	Count	Total Length	Total Area
6" - 12"	eaves	1	1' 7"	1 ft ²
12" - 18"	eaves	4	3' 5"	5 ft ²
18" - 24"	eaves	1	8"	1 ft ²
24" - 48"	eaves	8	155'	322 ft ²
> 48"	eaves	3	40' 6"	418 ft ²
Totals			201' 3"	747 ft ²





HOVER

Complete Measurements

1915 Southeast Van Loon Terrace,
FACADES

Stucco

Facade	Area	Openings	Shutters	Vents
STC-1	109 ft ²	1	-	-
STC-2	5 ft ²	-	-	-
STC-3	5 ft ²	-	-	-
STC-4	5 ft ²	1	-	-
STC-5	5 ft ²	-	-	-
STC-6	5 ft ²	-	-	-
STC-7	5 ft ²	1	-	-
STC-8	6 ft ²	-	-	-
STC-9	5 ft ²	-	-	-
STC-10	5 ft ²	1	-	-
STC-11	5 ft ²	-	-	-
STC-12	5 ft ²	-	-	-
STC-13	34 ft ²	1	-	-
STC-14	68 ft ²	3	-	-
STC-15	332 ft ²	2	-	-
STC-16	23 ft ²	-	-	-
STC-17	337 ft ²	4	-	-
STC-18	5 ft ²	-	-	-
STC-19	5 ft ²	-	-	-

© 2023 HOVER Inc. All rights reserved. This document and the images, measurement data, format and contents are the exclusive property of HOVER. HOVER is the registered trademark of Hover Inc. All other brands, products and company names mentioned herein may be trademarks or registered trademarks of their respective holders.

Use of this document is subject to HOVER's Terms of Use and is provided "as is." HOVER makes no guarantees, representations or warranties of any kind, express or implied, arising by law or otherwise relating to this document or its contents or use, including but not limited to, quality, accuracy, completeness, reliability, or fitness for a particular purpose.



HOVER

Complete Measurements

1915 Southeast Van Loon Terrace,...
FACADES

Stucco (cont.)

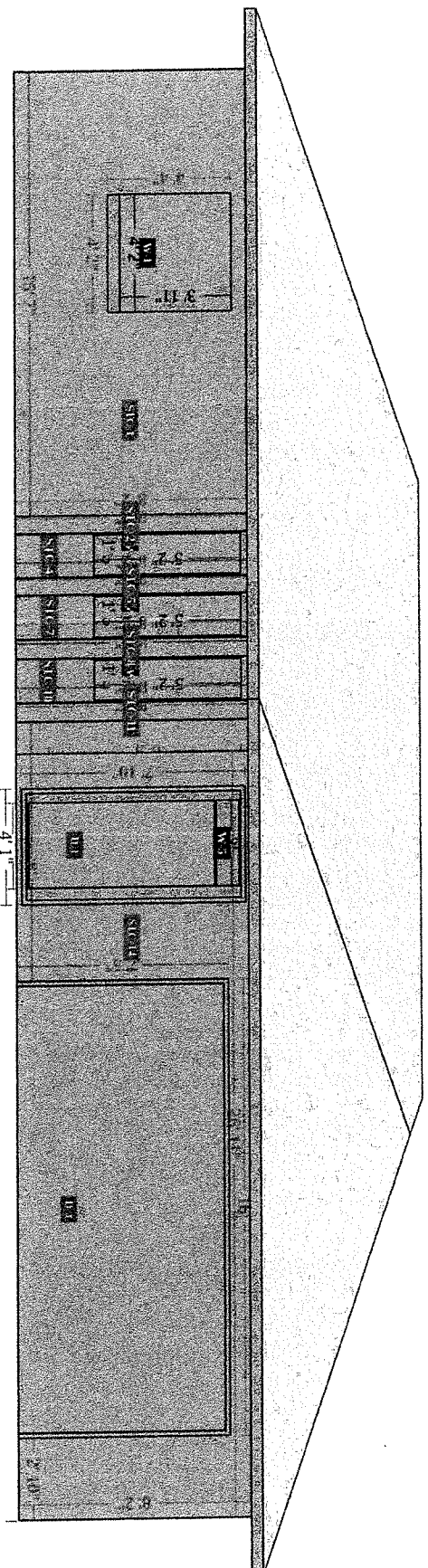
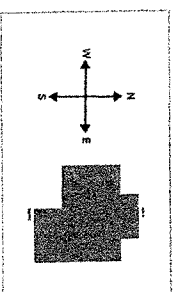
Facade	Area	Openings	Shutters	Vents
STC-20	124 ft ²	-	-	-
STC-21	5 ft ²	-	-	-
STC-22	5 ft ²	-	-	-
STC-23	212 ft ²	3	-	-
STC-24	6 ft ²	-	-	-
Total	1321 ft ²	17	0	0



HOVER

Complete Measurements

1915 Southeast Van Loon Terrace,
FRONT

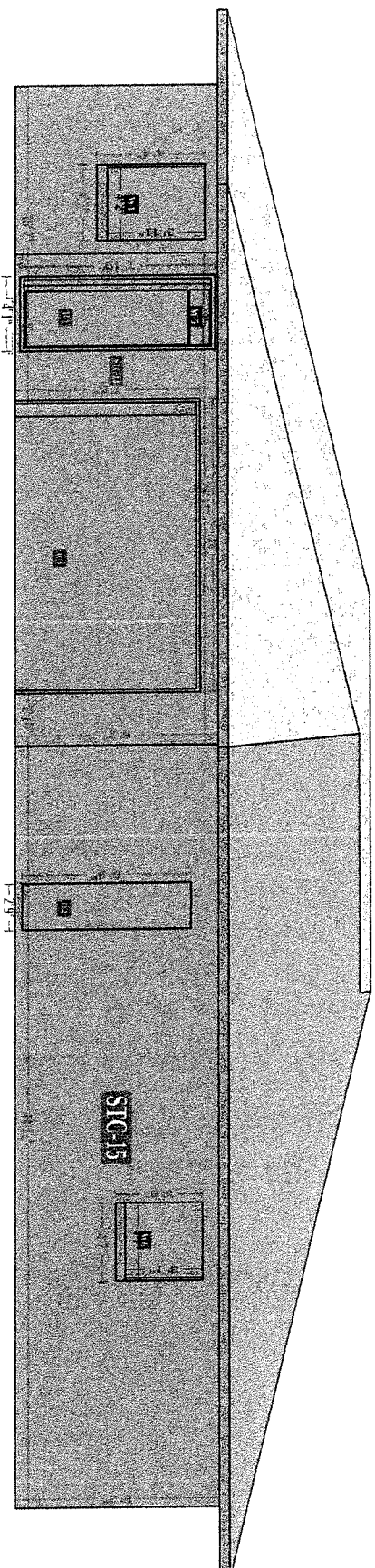
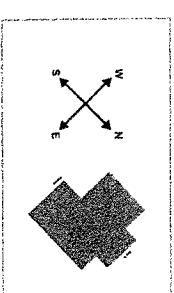




HOVER

Complete Measurements

1915 Southeast Van Loon Terrace,...
FRONT-RIGHT

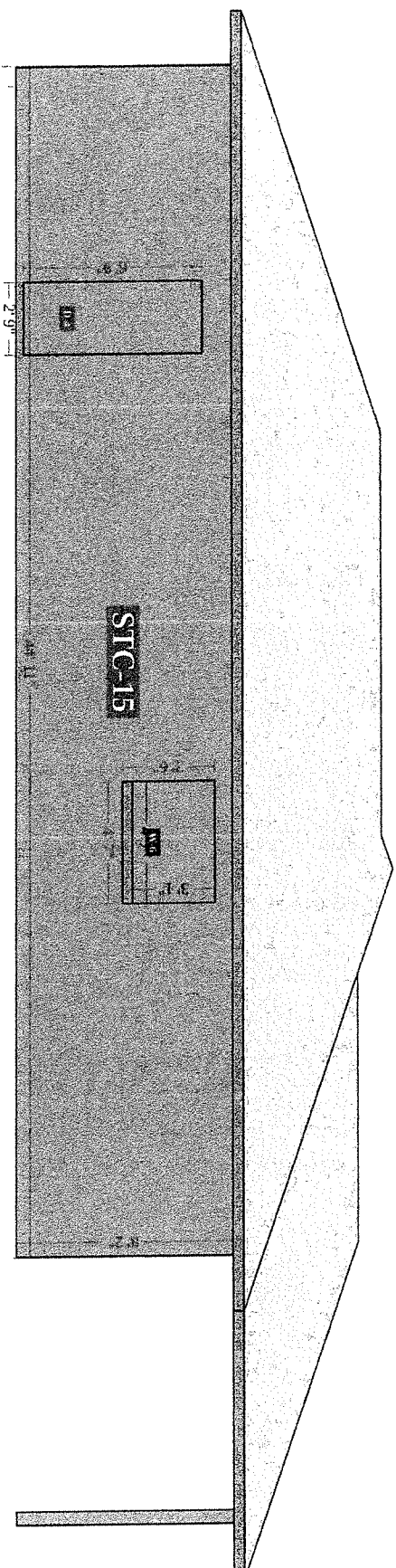
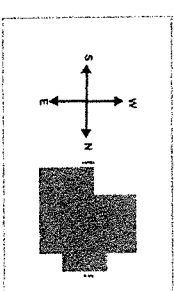




HOVER

Complete Measurements

1915 Southeast Van Loon Terrace,
RIGHT

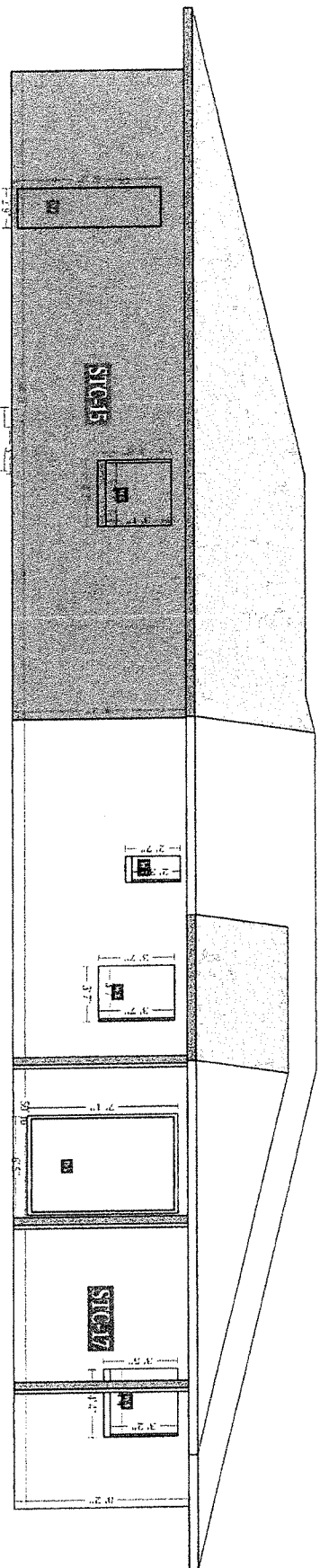
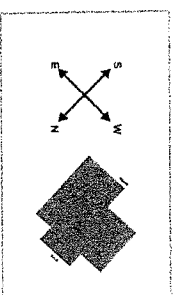




HOVER

Complete Measurements

1915 Southeast Van Loon Terrace,
RIGHT-BACK



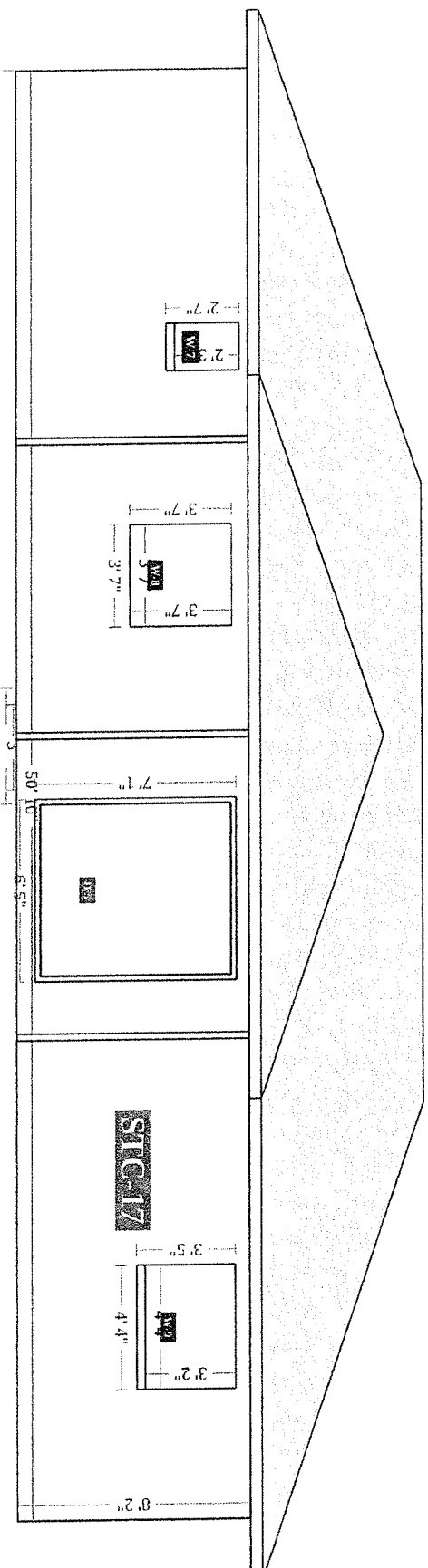
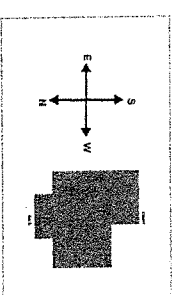


HOVER

Complete Measurements

1915 Southeast Van Loon Terrace,...

BACK

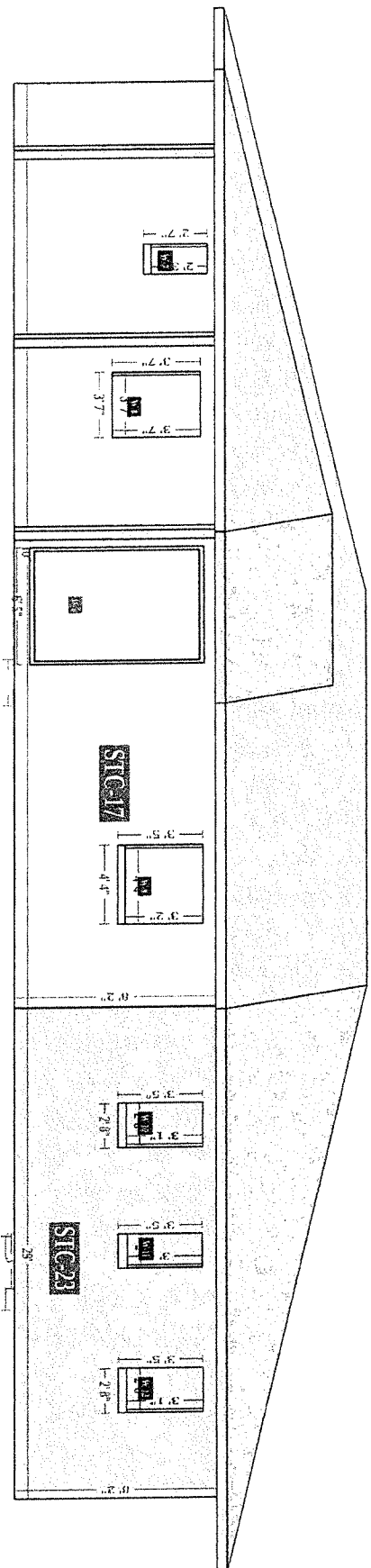
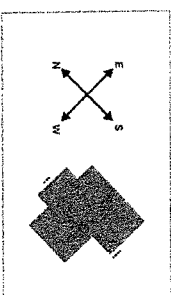




HOVER

Complete Measurements

1915 Southeast Van Loon Terrace,...
BACK-LEFT

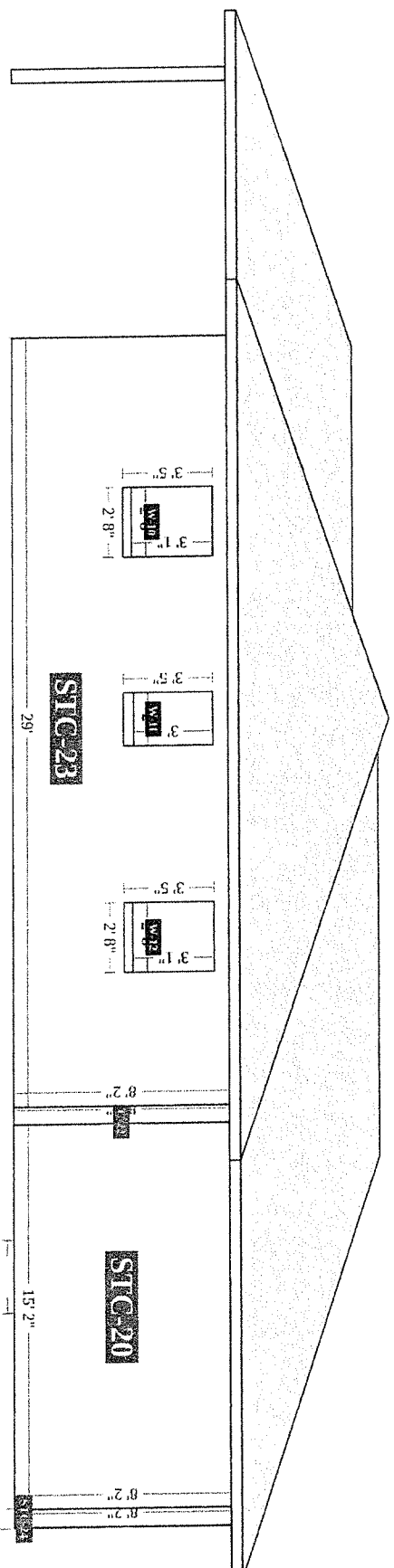
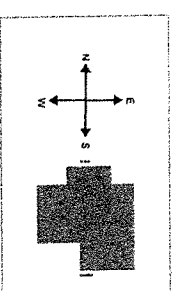




HOVER

Complete Measurements

1915 Southeast Van Loon Terrace,
LEFT

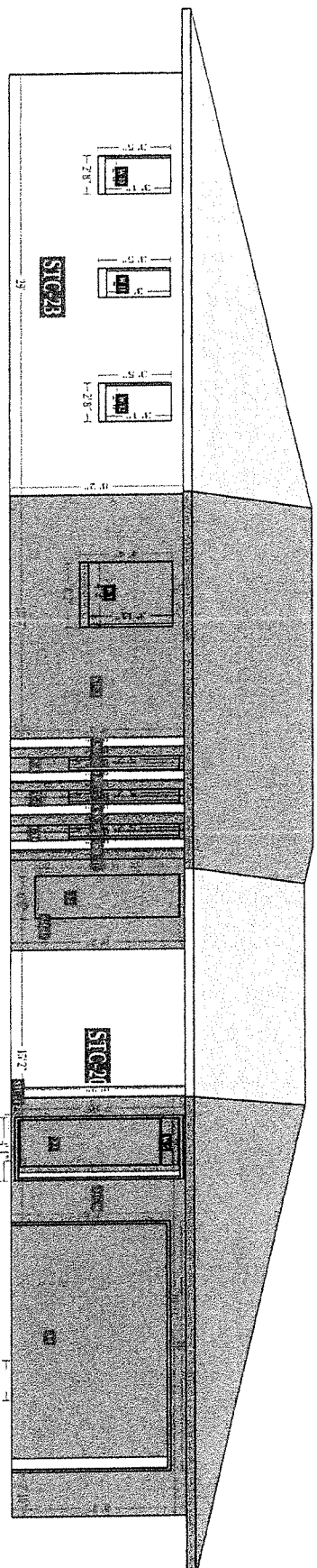
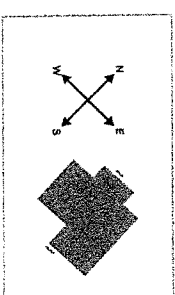




HOVER

Complete Measurements

1915 Southeast Van Loon Terrace,
LEFT-FRONT





HOVER

Complete Measurements

1915 Southeast Van Loon Terrace,...
OPENINGS

Windows

Group	Group Width x Height	Group United Inches	Opening	Width x Height	United Inches	Area
WG-1	50" x 47"	97"	W-1	50" x 47"	97"	16 ft ²
WG-2	17" x 62"	79"	W-2	17" x 62"	79"	7 ft ²
WG-3	17" x 62"	79"	W-3	17" x 62"	79"	7 ft ²
WG-4	17" x 62"	79"	W-4	17" x 62"	79"	7 ft ²
WG-5	36" x 10"	46"	W-5	36" x 10"	46"	2 ft ²
WG-6	55" x 37"	92"	W-6	55" x 37"	92"	14 ft ²
WG-7	20" x 27"	47"	W-7	20" x 27"	47"	4 ft ²
WG-8	43" x 43"	85"	W-8	43" x 43"	85"	13 ft ²
WG-9	52" x 38"	90"	W-9	52" x 38"	90"	14 ft ²
WG-10	32" x 37"	69"	W-10	32" x 37"	69"	8 ft ²
WG-11	24" x 36"	60"	W-11	24" x 36"	60"	6 ft ²
WG-12	32" x 37"	69"	W-12	32" x 37"	69"	8 ft ²
			Total	-	892"	106 ft ²

Powered by



© 2023 HOVER Inc. All rights reserved. This document and the images, measurement data, format and contents are the exclusive property of HOVER. HOVER is the registered trademark of Hover Inc. All other brands, products and company names mentioned herein may be trademarks or registered trademarks of their respective holders.

Use of this document is subject to HOVER's Terms of Use and is provided "as is." HOVER makes no guarantees, representations or warranties of any kind, express or implied, arising by law or otherwise relating to this document or its contents or use, including but not limited to, quality, accuracy, completeness, reliability, or fitness for a particular purpose.

PROPERTY ID: 9749124

CASL LEE COUNTY

19 JUL 2023

Page 18



HOVER

Complete Measurements

1915 Southeast Van Loon Terrace,... OPENINGS

Doors

Opening	Width x Height
D-1	36" x 80"
D-2	32" x 80"
D-3	192" x 84"
D-4	32" x 80"
D-5	72" x 80"

*Door height and width have been snapped to standard

Entire Doors

Opening	Width x Height	Area
D-1	36" x 79"	20 ft ²
D-2	33" x 81"	19 ft ²
D-3	188" x 87"	114 ft ²
D-4	33" x 81"	19 ft ²
D-5	72" x 80"	40 ft ²
Total	-	212 ft ²

*Total door square footage includes entire door package (e.g. with transoms, sidelites, etc.)

Powered by



© 2023 HOVER Inc. All rights reserved. This document and the images, measurement data, format and contents are the exclusive property of HOVER. HOVER is the registered trademark of Hover Inc. All other brands, products and company names mentioned herein may be trademarks or registered trademarks of their respective holders.

Use of this document is subject to HOVER's Terms of Use and is provided "as is." HOVER makes no guarantees, representations or warranties of any kind, express or implied, arising by law or otherwise relating to this document or its contents or use, including but not limited to, quality, accuracy, completeness, reliability, or fitness for a particular purpose.

PROPERTY ID: 9749124

CASL LEE COUNTY

19 JUL 2023

Page 19



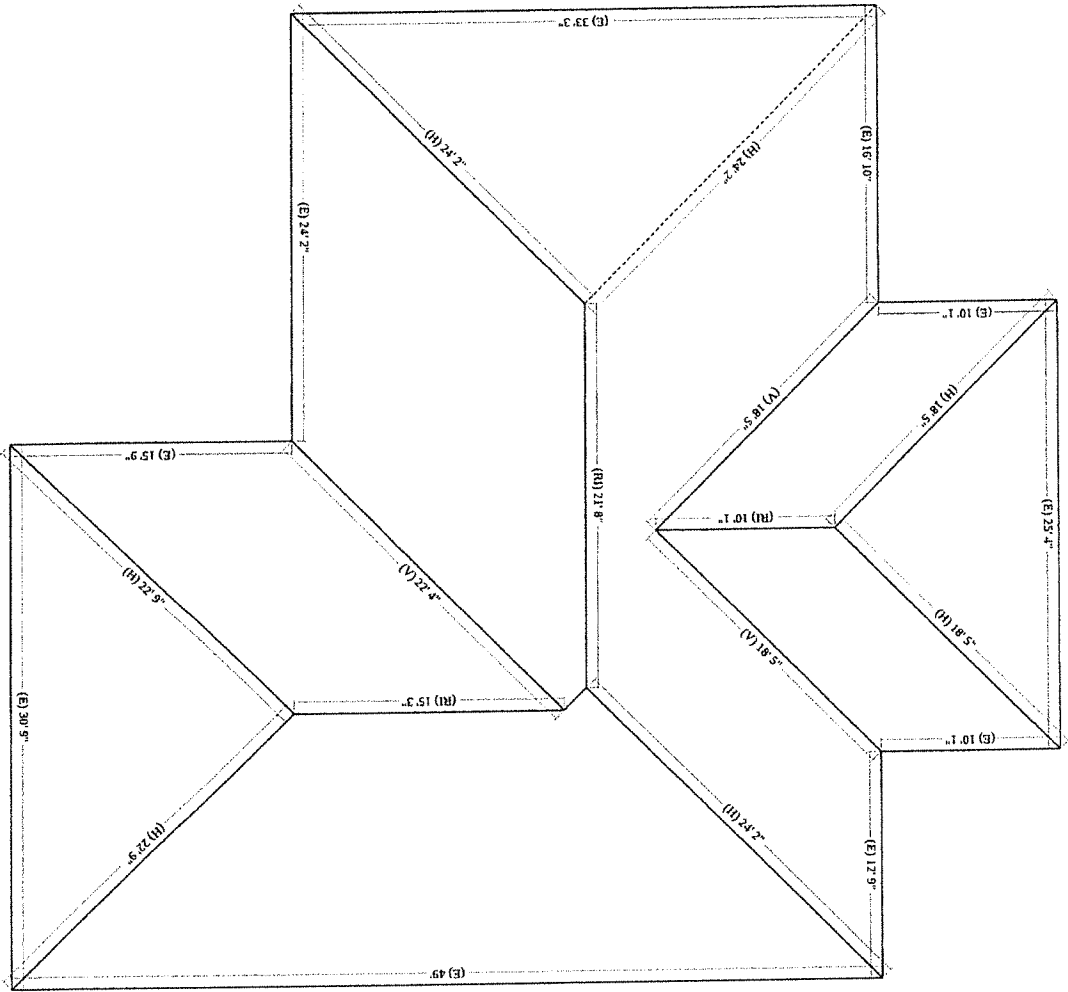
HOVER

Complete Measurements

1915 Southeast Van Loon Terrace,...
ROOF MEASUREMENTS

Roof	Length
Ridges (RI)	47' 1"
Hips (H)	156' 8"
Valleys (V)	59' 3"
Rakes (RA)	-
Eaves (E)	228' 3"
Flashing (F)*	-
Step Flashing (SF)*	-
Transition Line (TL)	-

*Please view the 3D model for more detail (e.g. flashing, step flashing and some other roof lines may be difficult to see on the PDF)





HOVER

Complete Measurements

1915 Southeast Van Loon Terrace,...
ROOF PITCH

Roof Pitch	Area	Percentage
4 / 12	2713 ft ²	100%

