

Appendix- C

4508 & 4510

Skyline Blvd, Cape

Coral Fl. 33914

4508 & 4510 Skyline Boulevard, Cape Coral, Lee County
Hardening of Buildings

| | |
|--------------------------------------|--|
| Location Name | 4508 & 4510 Skyline Blvd |
| City | Cape Coral |
| ST | FL |
| ZIP | 33914 |
| Address | 4510 Skyline Blvd, Cape Coral FL 33914 |
| County | Lee |
| Orig Year Built | 1982 |
| Deed Owner | Community Assisted and Supported Living, Inc. |
| Acquisition Date | 6/27/2012 |
| Parcel Num | <u>10106493</u> |
| STRAP | 10-45-23-C3-03373.0400 |
| Bed Rm | 2 |
| Bath | 2 |
| Sq. Ft. A/C | 942 |
| Permitting City/Cnty | Cape Coral |
| Construction | |
| Description2 | Joisted Masonry |
| Roof Frame/Roof Deck | 108-Wood Frame |
| Shape of Roof | 107-Gable roof med slope (10 deg to 26.5 deg) |
| Type of Roof Covering | 113-Shingle rated for high wind speeds (≥ 110 mph) |
| Predominant Exterior Wall / Cladding | 106-Reinforced Masonry |
| 2023 Hardening Assesment | <u>Report</u> |
| Images | <u>Images</u> |
| Deed | <u>Deed</u> |



HOVER

Complete Measurements

4510 Skyline Boulevard
CAPE CORAL, FL 33914



VIEW 3D MODEL

© 2023 HOVER Inc. All rights reserved. This document and the images, measurement data, format and contents are the exclusive property of HOVER. HOVER is the registered trademark of Hover Inc. All other brands, products and company names mentioned herein may be trademarks or registered trademarks of their respective holders.
Use of this document is subject to HOVER's Terms of Use and is provided "as is." HOVER makes no guarantees, representations or warranties of any kind, express or implied, arising by law or otherwise relating to this document or its contents or use, including but not limited to, quality, accuracy, completeness, reliability, or fitness for a particular purpose.

PROPERTY ID: 9748003
CASL LEE COUNTY
18 JUL 2023



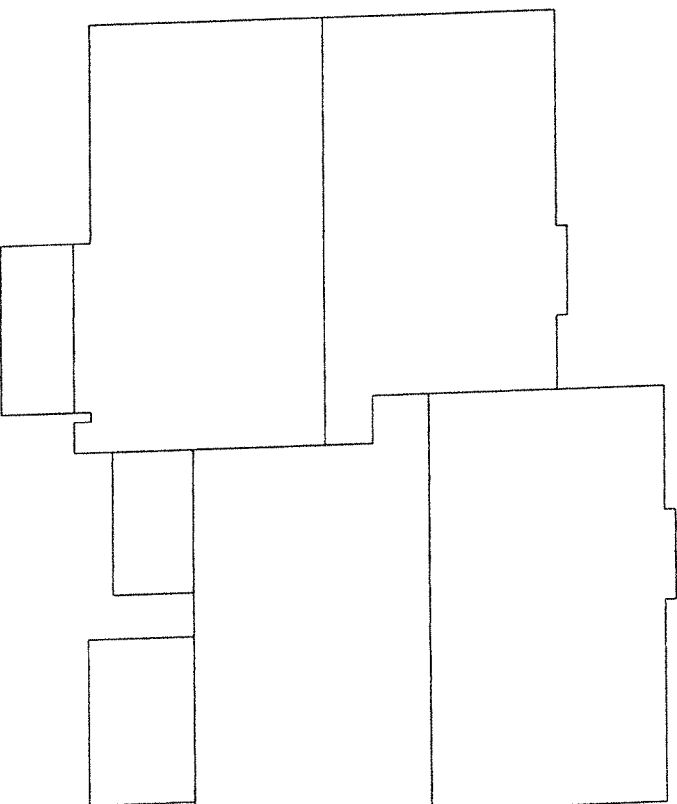
HOVER

Complete Measurements

4510 Skyline Boulevard, Cape Cor...
ROOF SUMMARY

| Roof | Area | Total | Length |
|---------------------|----------------------|-------|---------|
| Roof Facets | 2739 ft ² | 7 | - |
| Ridges / Hips | - | 2 | 64' |
| Valleys | - | 1 | 3' 8" |
| Rakes | - | 17 | 160' 7" |
| Eaves | - | 13 | 124' |
| Flashing | - | 1 | 9" |
| Step Flashing | - | 6 | 43' 2" |
| Drip Edge/Perimeter | - | - | 284' 7" |

| Roof Pitch* | Area | Percentage |
|-------------|----------------------|------------|
| 5 / 12 | 2482 ft ² | 90.62% |
| 2 / 12 | 185 ft ² | 6.75% |
| 1 / 12 | 72 ft ² | 2.63% |



Example Waste Factor Calculations

| | Zero Waste | +5% | +10% | +15% | +20% |
|---------|----------------------|----------------------|----------------------|----------------------|----------------------|
| Area | 2739 ft ² | 2876 ft ² | 3013 ft ² | 3150 ft ² | 3287 ft ² |
| Squares | 27 3/4 | 29 | 30 1/4 | 31 3/4 | 33 |

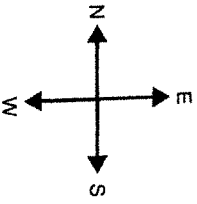
The table above provides the total roof area of a given property using waste percentages as noted. Please consider that area values and specific waste factors can be influenced by the size and complexity of the property, captured image quality, specific roofing techniques, and your own level of expertise. Additional square footage for Hip, Ridge, and Starter shingles are not included in this waste factor and will require additional materials. This table is only intended to make common waste calculations easier and should not be interpreted as recommendations.



HOVER

Complete Measurements

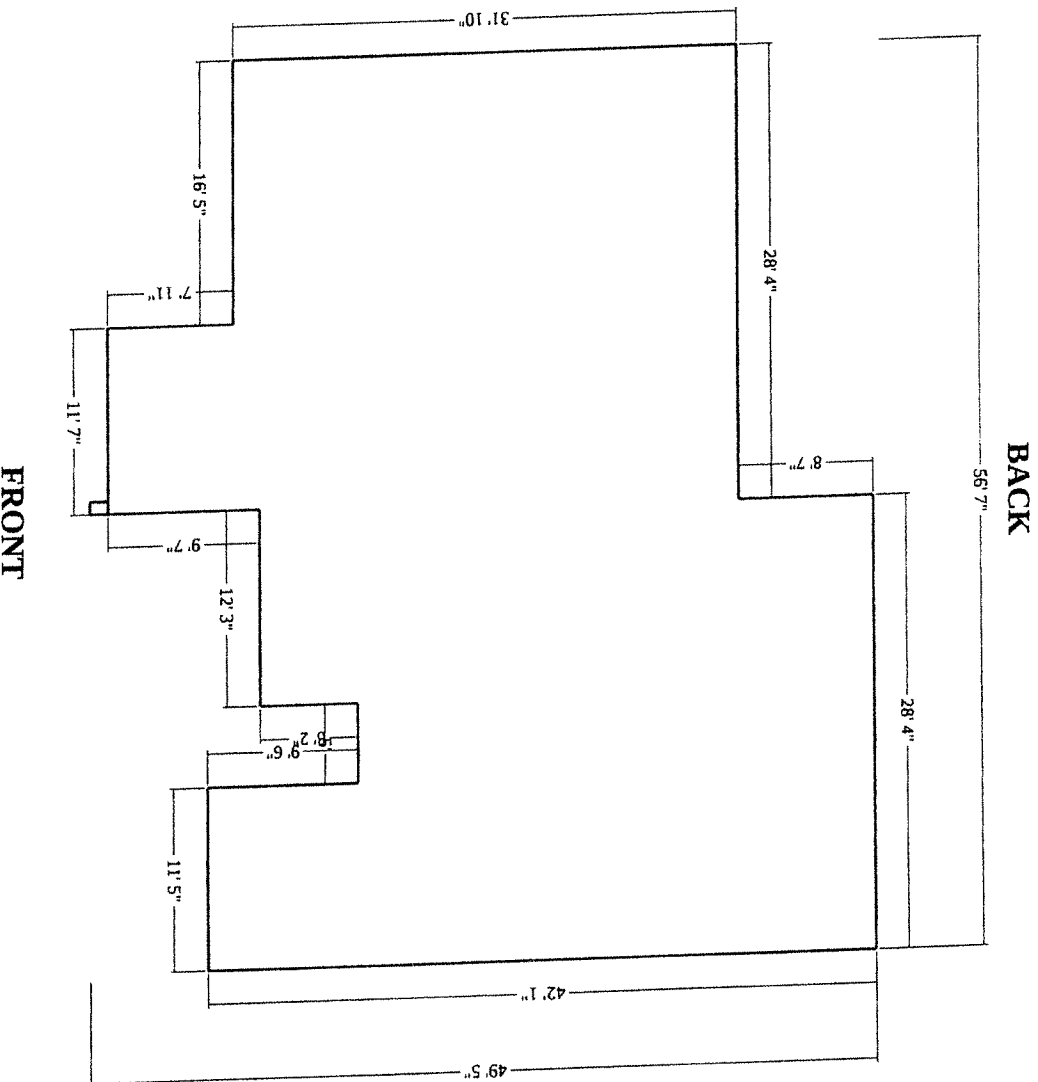
4510 Skyline Boulevard, Cape Cor...
FOOTPRINT



Number of Stories: 1

Footprint Perimeter: 232' 8"

Footprint Area: 2099 ft²

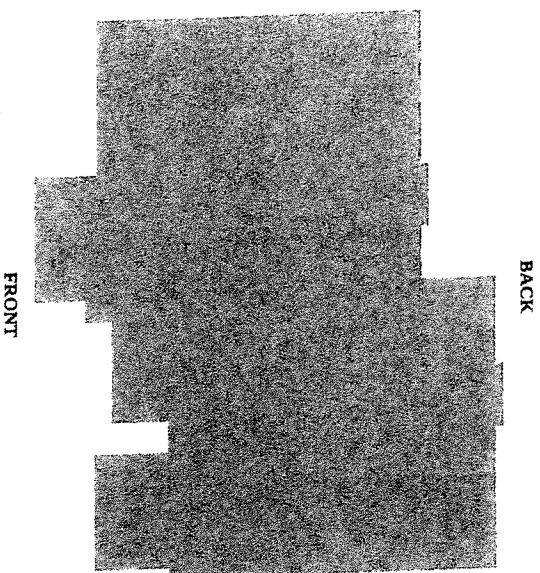




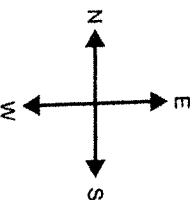
HOVER

Complete Measurements

4510 Skyline Boulevard, Cape Cor...
SIDING PER ELEVATION



Number of Stories: 1



Siding Per Elevation

| FRONT | | RIGHT | | LEFT | | BACK |
|--------------------|----------------------|--------------------|----------------------|--------------------|----------------------|-------------------|
| SI-1 | - 58 ft ² | SI-2 | - 54 ft ² | SI-3 | - 71 ft ² | |
| 58 ft ² | | 54 ft ² | | 71 ft ² | | 0 ft ² |



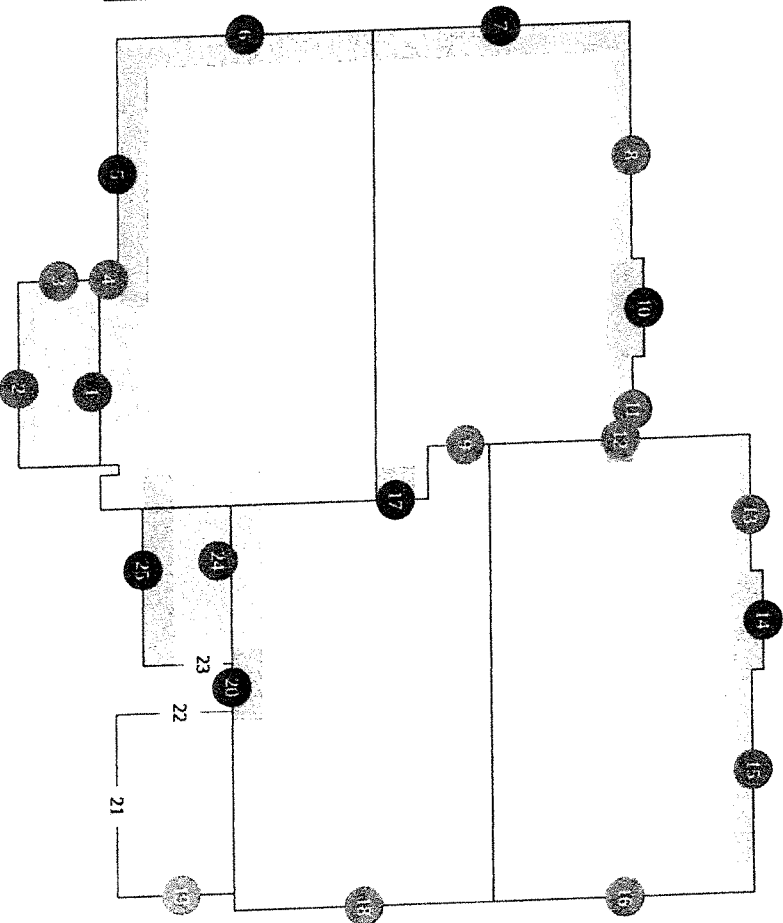
HOVER

Complete Measurements

4510 Skyline Boulevard, Cape Cor...
SOFFIT

Soffit Summary

| Depth | Type | Count | Total Length | Total Area |
|-----------|-------|-------|--------------|---------------------|
| 1" - 6" | rakes | 1 | 7' 5" | 3 ft ² |
| | rakes | 2 | 11' 6" | 9 ft ² |
| 6" - 12" | eaves | 1 | 12' 7" | 10 ft ² |
| | eaves | 1 | 10' 10" | 12 ft ² |
| 12" - 18" | rakes | 6 | 69' 7" | 115 ft ² |
| | eaves | 4 | 43' | 77 ft ² |
| 18" - 24" | rakes | 3 | 41' 11" | 90 ft ² |
| | eaves | 5 | 48' 2" | 112 ft ² |
| > 48" | rakes | 2 | 23' 10" | 167 ft ² |
| | eaves | 2 | 268' 9" | 595 ft ² |





HOVER

Complete Measurements

4510 Skyline Boulevard, Cape Cor...
SOFFIT

Soffit Breakdown

| num | Type | Depth | Length | Area | Pitch |
|-----|------|-------|---------|--------|--------|
| 1 | eave | 95" | 11' 7" | 92 ft² | 1 / 12 |
| 2 | eave | 13" | 10' 10" | 12 ft² | 1 / 12 |
| 3 | rake | 23" | 5' 7" | 11 ft² | 1 / 12 |
| 4 | rake | 23" | 1' 5" | 3 ft² | 5 / 12 |
| 5 | eave | 26" | 16' 5" | 35 ft² | 5 / 12 |
| 6 | rake | 26" | 19' 5" | 41 ft² | 5 / 12 |
| 7 | rake | 26" | 19' 5" | 41 ft² | 5 / 12 |
| 8 | eave | 24" | 14' 3" | 28 ft² | 5 / 12 |
| 9 | rake | 19" | 3' 8" | 6 ft² | 5 / 12 |
| 10 | eave | 35" | 6' 9" | 20 ft² | 5 / 12 |
| 11 | eave | 24" | 7' 3" | 14 ft² | 5 / 12 |
| 12 | rake | 19" | 19' 8" | 32 ft² | 5 / 12 |
| 13 | eave | 19" | 7' 9" | 12 ft² | 5 / 12 |
| 14 | eave | 30" | 6' 10" | 17 ft² | 5 / 12 |
| 15 | eave | 19" | 13' 8" | 22 ft² | 5 / 12 |
| 16 | rake | 20" | 19' 8" | 32 ft² | 5 / 12 |
| 17 | rake | 28" | 3' | 7 ft² | 5 / 12 |
| 18 | rake | 20" | 19' 8" | 32 ft² | 5 / 12 |
| 19 | rake | 5" | 7' 5" | 3 ft² | 2 / 12 |

| num | Type | Depth | Length | Area | Pitch |
|-----|------|-------|--------|--------|--------|
| 20 | eave | 26" | 5' | 11 ft² | 5 / 12 |
| 21 | eave | 9" | 12' 7" | 10 ft² | 2 / 12 |
| 22 | rake | 8" | 7' 5" | 5 ft² | 2 / 12 |
| 23 | rake | 12" | 4' 1" | 4 ft² | 2 / 12 |
| 24 | eave | 74" | 12' 3" | 75 ft² | 2 / 12 |
| 25 | eave | 26" | 13' 3" | 29 ft² | 2 / 12 |

Feature is too small to label on the plan diagram



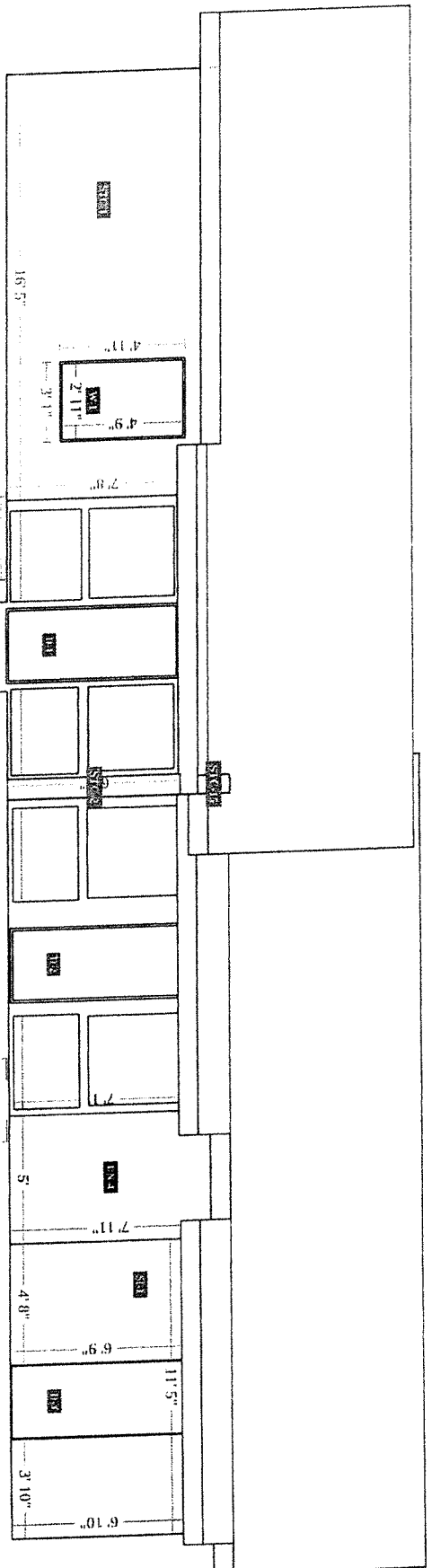
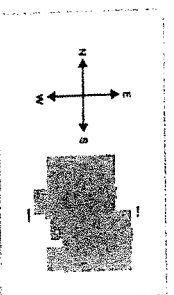
© 2023 HOVER Inc. All rights reserved. This document and the images, measurement data, format and contents are the exclusive property of HOVER. HOVER is the registered trademark of Hover Inc. All other brands, products and company names mentioned herein may be trademarks or registered trademarks of their respective holders.
Use of this document is subject to HOVER's Terms of Use and is provided "as is." HOVER makes no guarantees, representations or warranties of any kind, express or implied, arising by law or otherwise relating to this document or its contents or use, including but not limited to, quality, accuracy, completeness, reliability, or fitness for a particular purpose.



HOVER

Complete Measurements

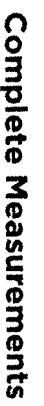
4510 Skyline Boulevard, Cape Cor...
FRONT



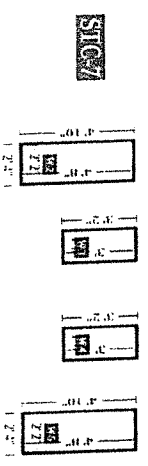
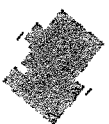
Powered by
HOVER

© 2023 HOVER Inc. All rights reserved. This document and the images, measurement data, format and contents are the exclusive property of HOVER. HOVER is the registered trademark of Hover Inc. All other brands, products and company names mentioned herein may be trademarks or registered trademarks of their respective holders.
Use of this document is subject to HOVER's Terms of Use and is provided "as is." HOVER makes no guarantees, representations or warranties of any kind, express or implied, arising by law or otherwise relating to this document or its contents or use, including but not limited to, quality, accuracy, completeness, reliability, or fitness for a particular purpose.

PROPERTY ID: 9748003
CASL LEE COUNTY
18 JUL 2023
Page 9



FRONT-RIGHT



Use of this document is subject to HOVER's Terms of Use and is provided "as is." HOVER makes no guarantees, representations or warranties of any kind, express or implied, arising by law or otherwise relating to this document or its contents or use, including but not limited to quality, accuracy, completeness, reliability or fitness for a particular purpose.

PROPERTY ID: 9748003

18 JUL 2023

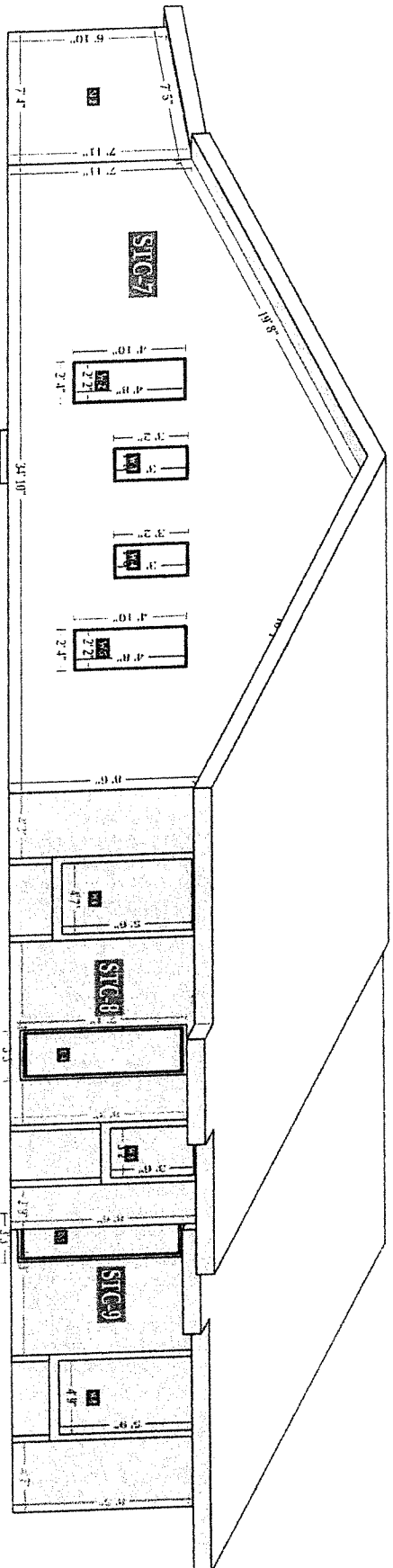
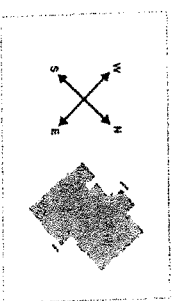
Page 10



HOVER

Complete Measurements

4510 Skyline Boulevard, Cape Cor...
RIGHT-BACK




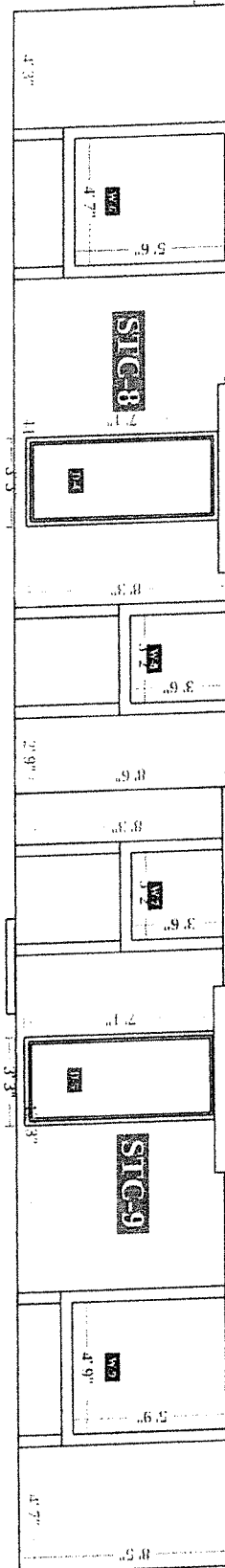
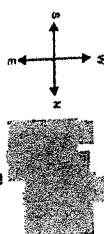
Powered by
HOVER

© 2023 HOVER Inc. All rights reserved. This document and the images, measurement data, format and contents are the exclusive property of HOVER. HOVER is the registered trademark of Hover Inc. All other brands, products and company names mentioned herein may be trademarks or registered trademarks of their respective holders.
Use of this document is subject to HOVER's Terms of Use and is provided "as is." HOVER makes no guarantees, representations or warranties of any kind, express or implied, arising by law or otherwise relating to this document or its contents or use, including but not limited to, quality, accuracy, completeness, reliability, or fitness for a particular purpose.

PROPERTY ID: 9748003
CASL LEE COUNTY
18 JUL 2023
Page 12



BACK



HOVER

Use of this document is subject to HOVER's Terms of Use and is provided "as is." HOVER makes no guarantees, representations or warranties of any kind, express or implied, arising by law or otherwise relating to this document or its contents or use, including but not limited to, quality, accuracy, completeness, reliability, or fitness for a particular purpose.

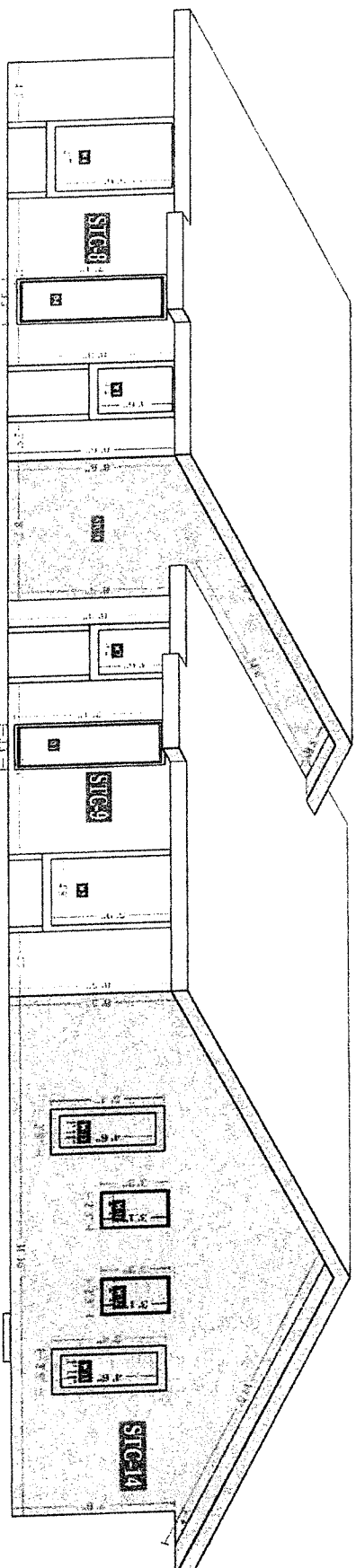
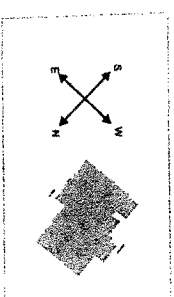
PROPERTY ID: 9748003
CASL LEE COUNTY
18 JUL 2023
Page 13



HOVER

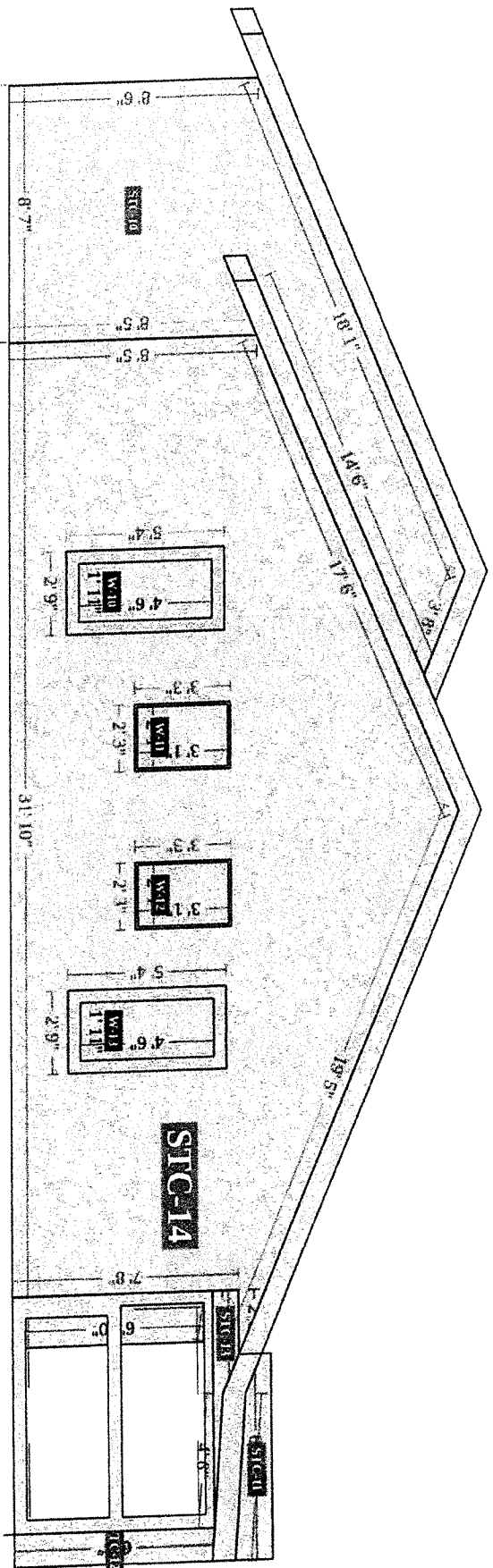
Complete Measurements

4510 Skyline Boulevard, Cape Cor...
BACK-LEFT





4510 Skyline Boulevard, Cape Cor...
LEFT

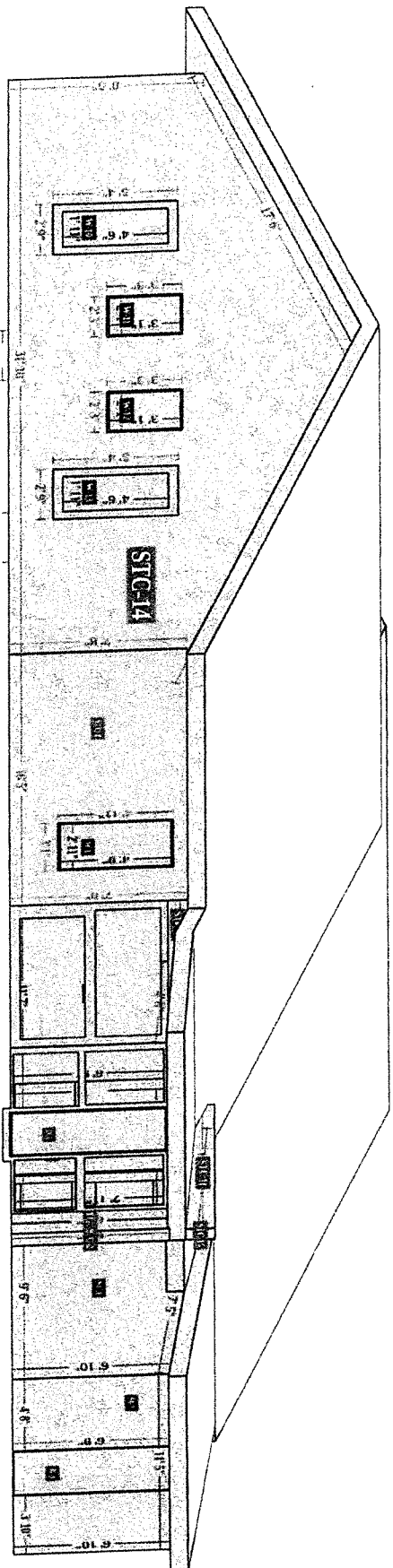
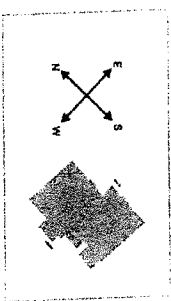




HOVER

Complete Measurements

4510 Skyline Boulevard, Cape Cor...
LEFT-FRONT





HOVER

Complete Measurements

4510 Skyline Boulevard, Cape Cor...
FACADES

Stucco

| Facade | Area | Openings | Shutters | Vents |
|---------|----------------------|----------|----------|-------|
| STC-1 | 110 ft ² | 1 | - | - |
| STC-2 | 5 ft ² | - | - | - |
| STC-3 | 54 ft ² | - | - | - |
| STC-4 | 11 ft ² | 1 | - | - |
| STC-5 | 58 ft ² | - | - | - |
| STC-6 | 3 ft ² | - | - | - |
| STC-7 | 377 ft ² | 4 | - | - |
| STC-8 | 140 ft ² | 3 | - | - |
| STC-9 | 136 ft ² | 3 | - | - |
| STC-10 | 114 ft ² | - | - | - |
| STC-11 | 7 ft ² | - | - | - |
| STC-12 | 7 ft ² | - | - | - |
| STC-13 | 3 ft ² | 1 | - | - |
| STC-14 | 334 ft ² | 4 | - | - |
| STC-15* | 1 ft ² | - | - | - |
| STC-16* | 0 ft ² | - | - | - |
| Total | 1360 ft ² | 17 | 0 | 0 |

* Facet is not visible due to size or location



HOVER

Complete Measurements

4510 Skyline Boulevard, Cape Cor...
FACADES

Unknown (missing photos)

| Facade | Area | Openings | Shutters | Vents |
|--------|---------------------|----------|----------|-------|
| UN-1 | 79 ft ² | - | - | - |
| UN-2 | 44 ft ² | - | - | - |
| UN-3 | 87 ft ² | - | - | - |
| UN-4 | 39 ft ² | - | - | - |
| Total | 249 ft ² | 0 | 0 | 0 |



HOVER

Complete Measurements

4510 Skyline Boulevard, Cape Cor...
SIDING

Facades

| Facade | Area | Trim | | | Corners | | Roofline | | Openings | | |
|--------|---------|---------------|--------|----------|---------|---------|--------------------|---------------------|----------|-------|--------|
| | | Level Starter | Sloped | Vertical | Inside | Outside | Level Frieze Board | Sloped Frieze Board | Tops | Sills | Slides |
| SI-1 | 58 ft² | 8' 6" | - | - | - | 13' 7" | 11' 5" | - | 2' 11" | - | 13' 6" |
| SI-2 | 54 ft² | 7' 4" | - | 7' 11" | - | 6' 10" | - | 7' 5" | - | - | - |
| SI-3 | 71 ft² | 9' 6" | - | 7' 11" | - | 6' 10" | 2' 2" | 7' 5" | - | - | - |
| Total* | 183 ft² | 25' 4" | - | 15' 9" | - | 13' 7" | 13' 7" | 14' 9" | 2' 11" | - | 13' 6" |

*Totals de-duplicate any line segments that are shared between multiple facades, and as a result may not represent a total summation of the corresponding column.



HOVER

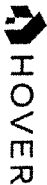
Complete Measurements

4510 Skyline Boulevard, Cape Cor...
OPENINGS

Windows

| Group | Group Width x Height | Group United Inches | Opening | Width x Height | United Inches | Area |
|-------|----------------------|---------------------|---------|----------------|---------------|---------------------|
| WG-1 | 35" x 57" | 92" | W-1 | 35" x 57" | 92" | 14 ft ² |
| WG-2 | 26" x 56" | 82" | W-2 | 26" x 56" | 82" | 10 ft ² |
| WG-3 | 20" x 36" | 57" | W-3 | 20" x 36" | 57" | 5 ft ² |
| WG-4 | 20" x 36" | 57" | W-4 | 20" x 36" | 57" | 5 ft ² |
| WG-5 | 26" x 56" | 82" | W-5 | 26" x 56" | 82" | 10 ft ² |
| WG-6 | 55" x 66" | 122" | W-6 | 55" x 66" | 122" | 25 ft ² |
| WG-7 | 38" x 42" | 81" | W-7 | 38" x 42" | 81" | 11 ft ² |
| WG-8 | 38" x 42" | 81" | W-8 | 38" x 42" | 81" | 11 ft ² |
| WG-9 | 57" x 69" | 127" | W-9 | 57" x 69" | 127" | 28 ft ² |
| WG-10 | 23" x 54" | 78" | W-10 | 23" x 54" | 78" | 9 ft ² |
| WG-11 | 25" x 37" | 62" | W-11 | 25" x 37" | 62" | 6 ft ² |
| WG-12 | 25" x 37" | 62" | W-12 | 25" x 37" | 62" | 6 ft ² |
| WG-13 | 23" x 54" | 78" | W-13 | 23" x 54" | 78" | 9 ft ² |
| | | | Total | - | 1057" | 149 ft ² |

Powered by



© 2023 HOVER Inc. All rights reserved. This document and the images, measurement data, format and contents are the exclusive property of HOVER. HOVER is the registered trademark of Hover Inc. All other brands, products and company names mentioned herein may be trademarks or registered trademarks of their respective holders.
Use of this document is subject to HOVER's Terms of Use and is provided "as is." HOVER makes no guarantees, representations or warranties of any kind, express or implied, arising by law or otherwise relating to this document or its contents or use, including but not limited to, quality, accuracy, completeness, reliability, or fitness for a particular purpose.

PROPERTY ID: 9748003

CASL LEE COUNTY

18 JUL 2023

Page 22



HOVER

Complete Measurements

4510 Skyline Boulevard, Cape Cor...
OPENINGS

Doors

| Opening | Width x Height |
|---------|----------------|
| D-1 | 32" x 80" |
| D-2 | 32" x 80" |
| D-3 | 32" x 80" |
| D-4 | 32" x 80" |
| D-5 | 32" x 80" |

*Door height and width have been snapped to standard

Entire Doors

| Opening | Width x Height | Area |
|---------|----------------|--------------------|
| D-1 | 35" x 81" | 20 ft ² |
| D-2 | 35" x 81" | 20 ft ² |
| D-3 | 33" x 80" | 19 ft ² |
| D-4 | 35" x 81" | 20 ft ² |
| D-5 | 35" x 81" | 20 ft ² |
| Total | - | 99 ft ² |

*Total door square footage includes entire door package (e.g. with transoms, sidelites, etc.)



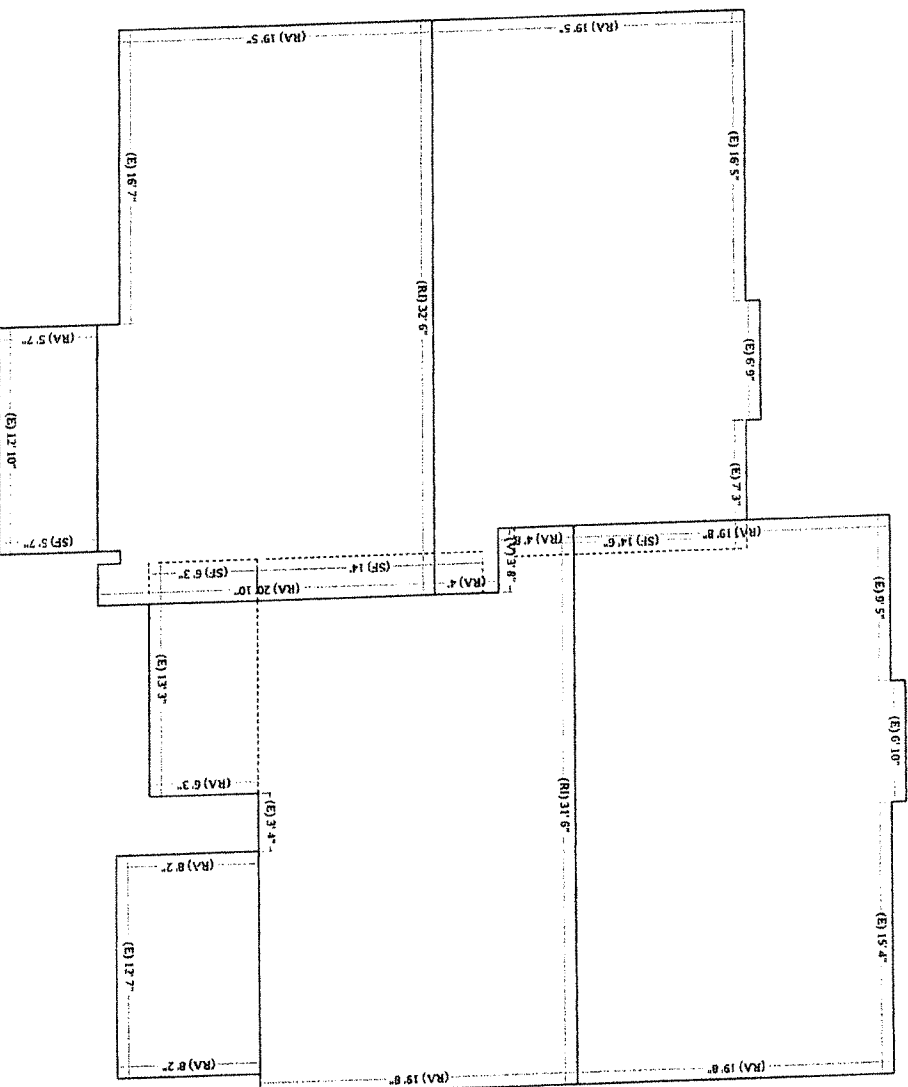
HOVER

Complete Measurements

4510 Skyline Boulevard, Cape Cor...
ROOF MEASUREMENTS

| Roof | Length |
|----------------------|---------|
| Ridges (RI) | 64' |
| Hips (H) | - |
| Valleys (V) | 3' 8" |
| Rakes (RA) | 160' 7" |
| Eaves (E) | 124' |
| Flashing (F)* | 9" |
| Step Flashing (SF)* | 43' 2" |
| Transition Line (TL) | - |

*Please view the 3D model for more detail (e.g. flashing, step flashing and some other roof lines may be difficult to see on the PDF)





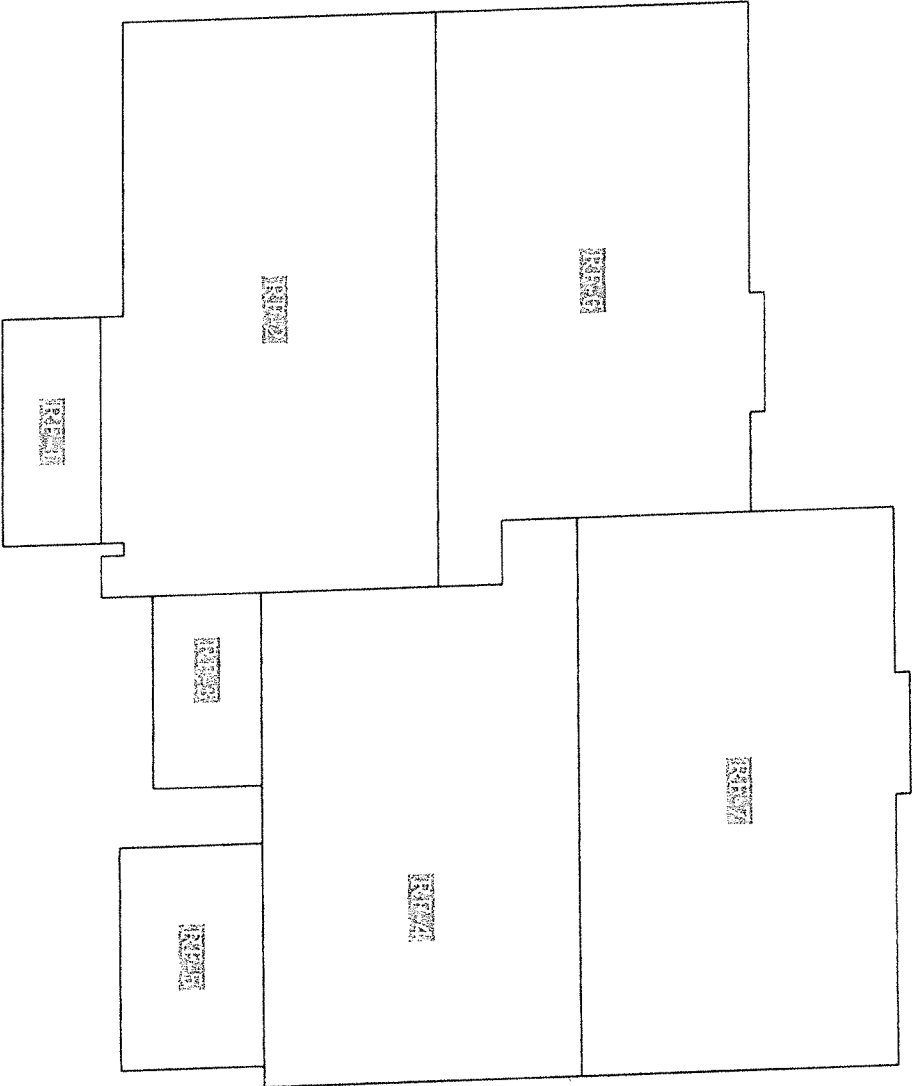
HOVER

Complete Measurements

4510 Skyline Boulevard, Cape Cor...
ROOF FACETS

Roof Facets

| Facet | Area | Pitch |
|-------|---------|-------|
| RF-1 | 72 ft² | 1/12 |
| RF-2 | 653 ft² | 5/12 |
| RF-3 | 83 ft² | 2/12 |
| RF-4 | 598 ft² | 5/12 |
| RF-5 | 102 ft² | 2/12 |
| RF-6 | 605 ft² | 5/12 |
| RF-7 | 626 ft² | 5/12 |





HOVER

Complete Measurements

4510 Skyline Boulevard, Cape Cor...
ROOF AREA

| Roof | Facets | Total |
|-------|--------|----------|
| Total | 7 | 2739 ft² |





HOVER

Complete Measurements

4510 Skyline Boulevard, Cape Cor...
ROOF PITCH

| Roof Pitch | Area | Percentage |
|------------|----------------------|------------|
| 5 / 12 | 2482 ft ² | 90.62% |
| 2 / 12 | 185 ft ² | 6.75% |
| 1 / 12 | 72 ft ² | 2.63% |

