

Appendix- E
1820 Paul St.
Ft Myers Fl. 33901

1820 Paul Street, Fort Myers, Lee County
Hardening of Buildings

Location Name	1820 Paul Street
City	Fort Myers
ST	FL
ZIP	33901
Address	1820 Paul Street, Fort Myers FL 33901
County	Lee
Orig Year Built	1960
Deed Owner	Community Assisted and Supported Living, Inc.
Acquisition Date	9/16/2016
Parcel Num	<u>10184916</u>
STRAP	35-44-24-P3-01501.0440
Bedroom	4
Bath	2
Sq. Ft. A/C	1,625
Permitting City/Cnty	Fort Myers
Construction Description2	Joisted Masonry
Roof Frame/Roof Deck	108-Wood Frame
Shape of Roof	107-Gable roof med slope (10 deg to 26.5 deg)
Type of Roof Covering	113-Shingle rated for high wind speeds (≥ 110 mph)
Predominant Exterior Wall / Cladding	106-Reinforced Masonry
2023 Hardending Assessment	<u>Report</u>
Images	<u>Images</u>
Deed	<u>Deed</u>



HOVER

Complete Measurements

1820 Paul Street
FORT MYERS, FL 33901

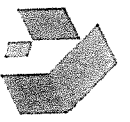


VIEW 3D MODEL

© 2023 HOVER Inc. All rights reserved. This document and the images, measurement data, format and contents are the exclusive property of HOVER. HOVER is the registered trademark of Hover Inc. All other brands, products and company names mentioned herein may be trademarks or registered trademarks of their respective holders.

Use of this document is subject to HOVER's Terms of Use and is provided "as is." HOVER makes no guarantees, representations or warranties of any kind, express or implied, arising by law or otherwise relating to this document or its contents or use, including but not limited to, quality, accuracy, completeness, reliability, or fitness for a particular purpose.

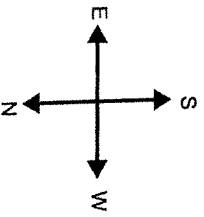
PROPERTY ID: 9746348
CASL LEE COUNTY
20 JUL 2023



HOVER

Complete Measurements

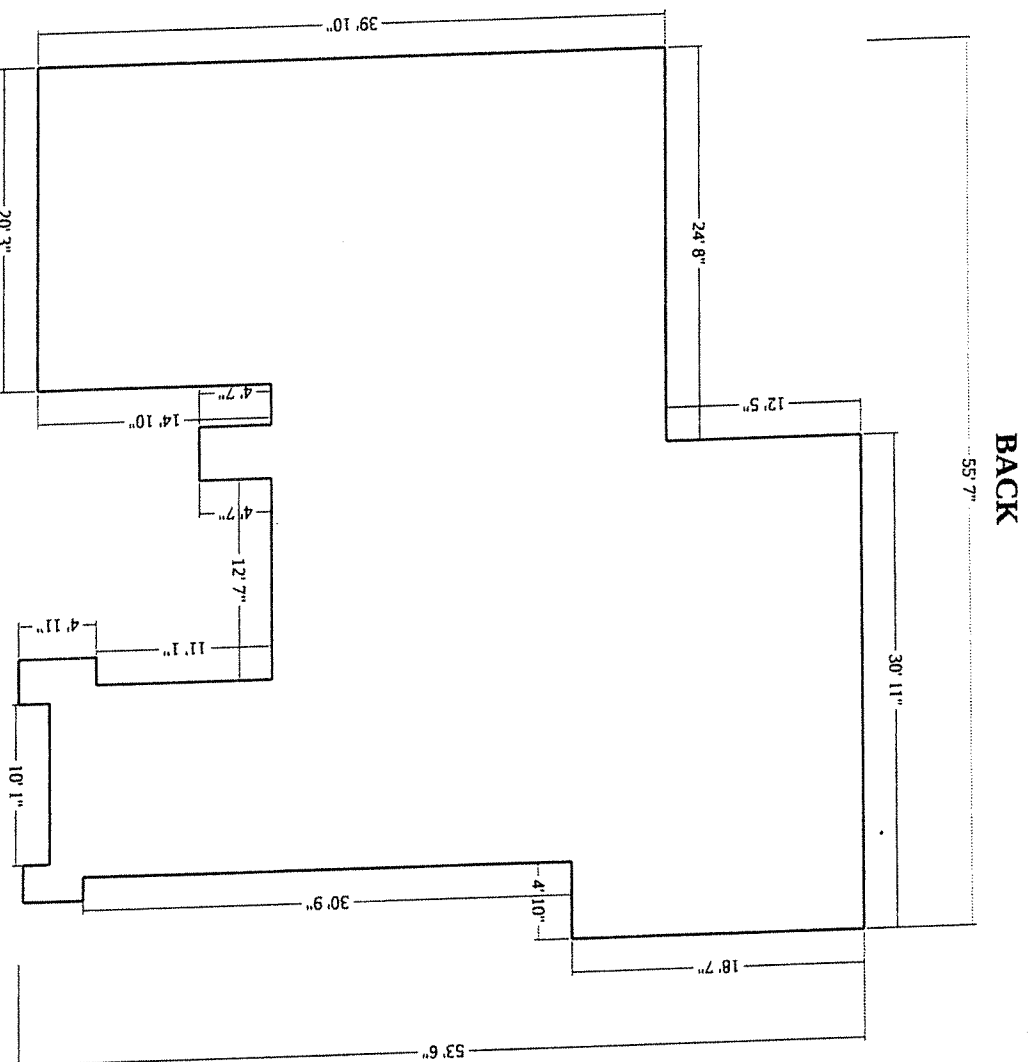
1820 Paul Street, Fort Myers, FL
FOOTPRINT



Number of Stories: 1

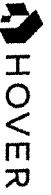
Footprint Perimeter: 266' 7"

Footprint Area: 2187 ft²



FRONT

Powered by



© 2023 HOVER Inc. All rights reserved. This document and the images, measurement data, format and contents are the exclusive property of HOVER. HOVER is the registered trademark of Hover Inc. All other brands, products and company names mentioned herein may be trademarks or registered trademarks of their respective holders.

Use of this document is subject to HOVER's Terms of Use and is provided "as is." HOVER makes no guarantees, representations or warranties of any kind, express or implied, arising by law or otherwise relating to this document or its contents or use, including but not limited to, quality, accuracy, completeness, reliability, or fitness for a particular purpose.

PROPERTY ID: 9746348

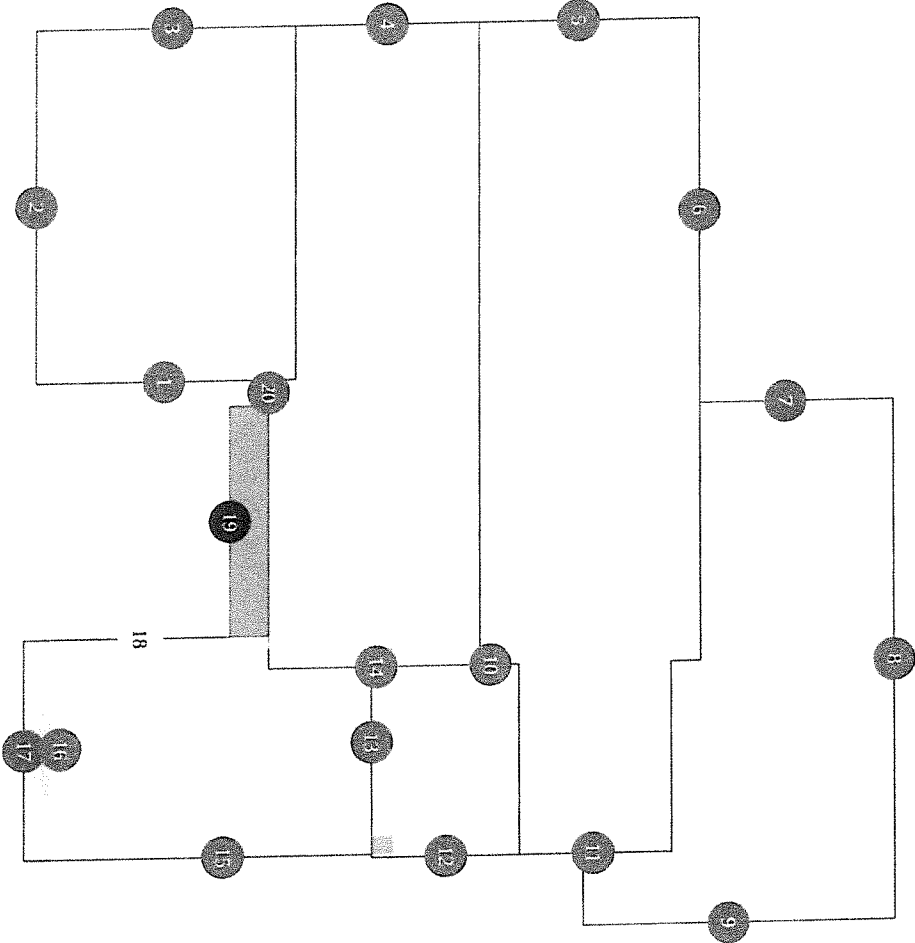
CASL LEE COUNTY

20 JUL 2023

Page 5

Soffit Summary

Depth	Type	Count	Total Length	Total Area
6" - 12"	eaves	1	15' 5"	14 ft²
12" - 18"	rakes	6	59' 11"	75 ft²
	eaves	7	142' 4"	198 ft²
18" - 24"	eaves	1	14' 1"	24 ft²
24" - 48"	eaves	1	14' 9"	37 ft²
> 48"	eaves	4	4' 9"	70 ft²
Totals			251' 4"	419 ft²



Soffit Breakdown

num	Type	Depth	Length	Area	Pitch
1	eave	161"	1' 2"	16 ft²	0 / 12
2	eave	18"	22' 8"	34 ft²	0 / 12
3	eave	173"	1' 2"	17 ft²	0 / 12
4	rake	14"	12' 10"	15 ft²	2 / 12
5	rake	14"	13'	16 ft²	2 / 12
6	eave	17"	24' 8"	35 ft²	2 / 12
7	eave	149"	1' 2"	15 ft²	0 / 12
8	eave	18"	33' 4"	50 ft²	0 / 12
9	eave	223"	1' 2"	22 ft²	0 / 12
10	rake	14"	1' 5"	2 ft²	2 / 12
11	rake	17"	9' 7"	13 ft²	2 / 12
12	rake	17"	9' 8"	13 ft²	2 / 12
13	eave	17"	12'	17 ft²	2 / 12
14	rake	14"	13' 7"	16 ft²	2 / 12
15	eave	14"	22'	26 ft²	0 / 12
16	eave	16"	10' 1"	13 ft²	0 / 12
17	eave	20"	14' 1"	24 ft²	0 / 12
18	eave	11"	15' 5"	14 ft²	0 / 12
19	eave	30"	14' 9"	37 ft²	2 / 12

num	Type	Depth	Length	Area	Pitch
20	eave	17"	17' 7"	24 ft²	2 / 12

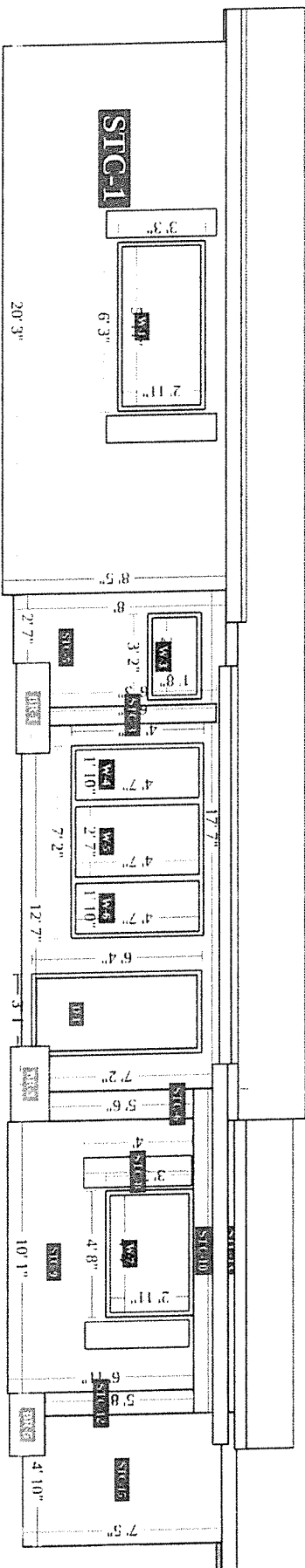
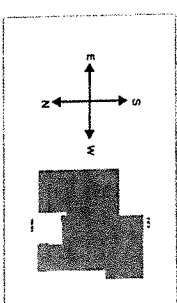
Feature is too small to label on the plan diagram



HOVER

Complete Measurements

1820 Paul Street, Fort Myers, FL
FRONT

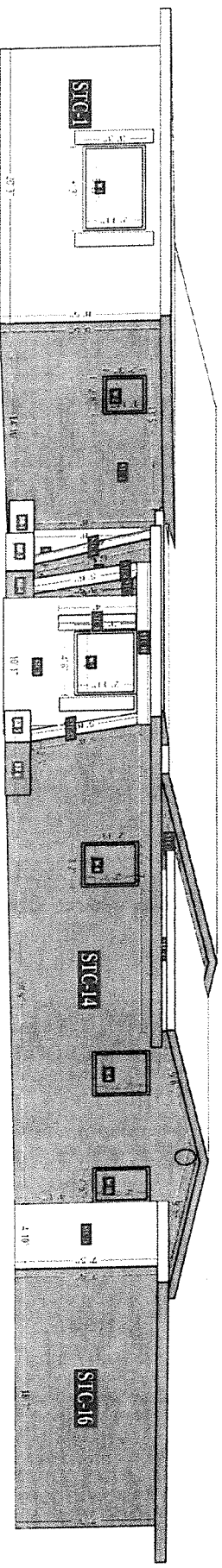
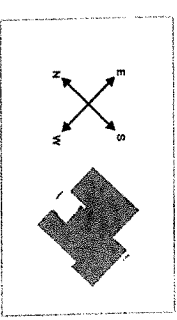




HOVER

Complete Measurements

1820 Paul Street, Fort Myers, FL
FRONT-RIGHT

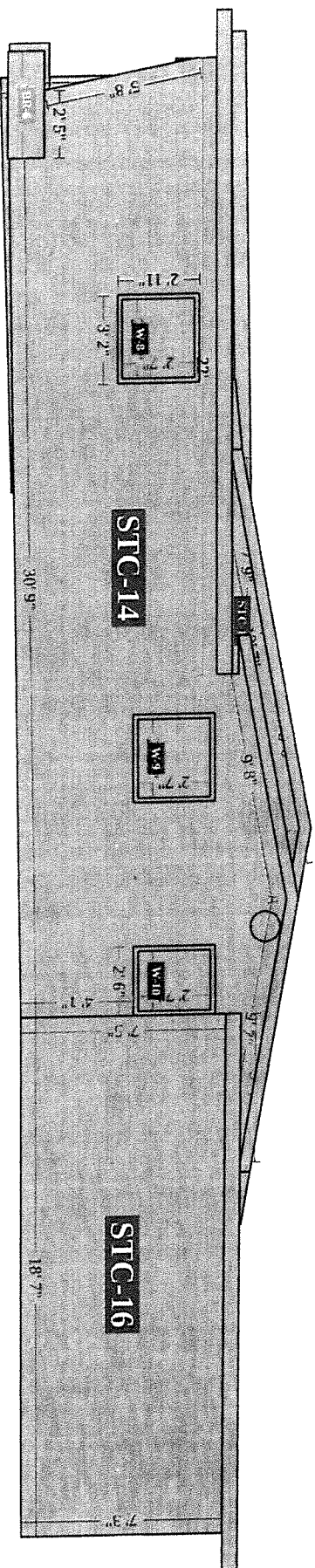
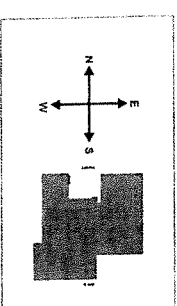




HOVER

Complete Measurements

1820 Paul Street, Fort Myers, FL
RIGHT





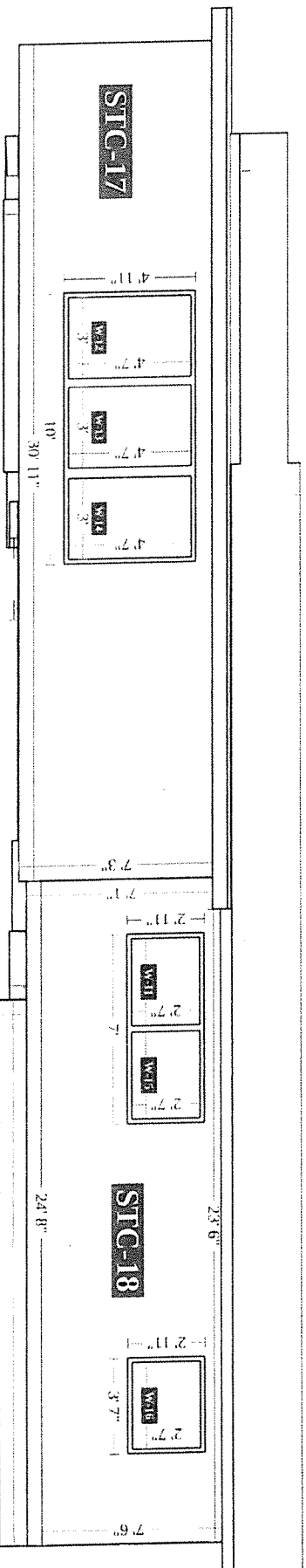
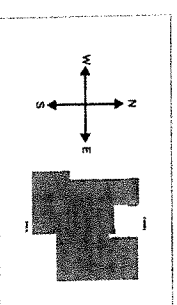
Page 11



HOVER

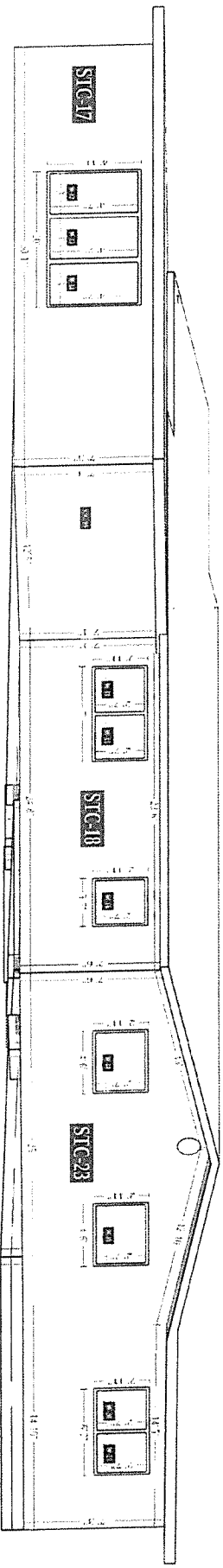
Complete Measurements

1820 Paul Street, Fort Myers, FL
BACK





1820 Paul Street, Fort Myers, FL
BACK-LEFT



HOVER

PROPERTY ID: 9746348
CASILEE COUNTY

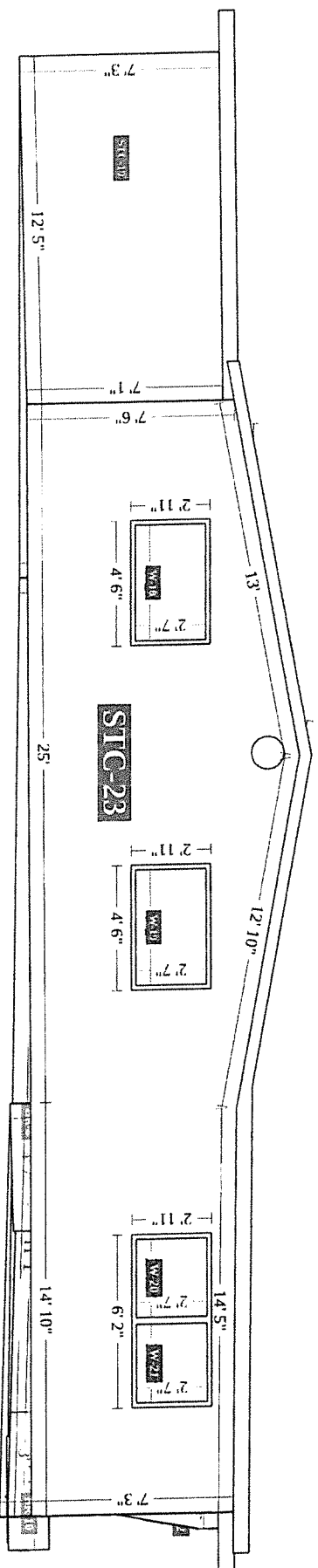
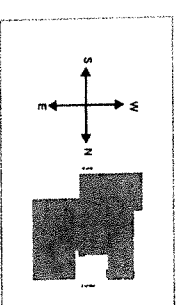
20 JUL 2023
Page 13



HOVER

Complete Measurements

1820 Paul Street, Fort Myers, FL
LEFT





LEFT-FRONT





HOVER

Complete Measurements

1820 Paul Street, Fort Myers, FL
FACADES

Stucco

Facade	Area	Openings	Shutters	Vents
STC-1	150 ft ²	1	2	-
STC-2	116 ft ²	1	-	-
STC-3	4 ft ²	-	-	-
STC-4	19 ft ²	-	-	-
STC-5	73 ft ²	5	-	-
STC-6	6 ft ²	-	-	-
STC-7	4 ft ²	-	-	-
STC-8	4 ft ²	-	-	-
STC-9	50 ft ²	1	1	-
STC-10	8 ft ²	-	-	-
STC-11	8 ft ²	-	-	-
STC-12	5 ft ²	-	-	-
STC-13	3 ft ²	-	-	-
STC-14	244 ft ²	3	-	1
STC-15	36 ft ²	-	-	-
STC-16	136 ft ²	-	-	-
STC-17	175 ft ²	3	-	-
STC-18	154 ft ²	3	-	-
STC-19	89 ft ²	-	-	-



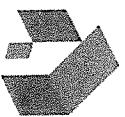
HOVER

Complete Measurements

1820 Paul Street, Fort Myers, FL
FACADES

Stucco (cont.)

Facade	Area	Openings	Shutters	Vents
STC-20	89 ft ²	1	-	-
STC-21	19 ft ²	-	-	-
STC-22	4 ft ²	-	-	-
STC-23	281 ft ²	4	-	1
Total	1677 ft ²	22	3	2



HOVER

Complete Measurements

1820 Paul Street, Fort Myers, FL
OPENINGS

Windows

Group	Group Width x Height	Group United Inches	Opening	Width x Height	United Inches	Area
WG-1	71" x 35"	106"	W-1	71" x 35"	106"	17 ft ²
WG-2	28" x 23"	51"	W-2	28" x 23"	51"	4 ft ²
WG-3	34" x 20"	55"	W-3	34" x 20"	55"	5 ft ²
WG-4	82" x 55"	137"	W-4	22" x 55"	78"	9 ft ²
			W-5	31" x 55"	87"	12 ft ²
			W-6	22" x 55"	78"	9 ft ²
			W-7	52" x 35"	87"	13 ft ²
WG-5	52" x 35"	87"	W-8	34" x 31"	65"	7 ft ²
WG-6	34" x 31"	65"	W-9	34" x 31"	65"	7 ft ²
WG-7	26" x 31"	57"	W-10	39" x 31"	69"	8 ft ²
WG-8	80" x 31"	111"	W-11	39" x 31"	69"	8 ft ²
WG-9	116" x 55"	171"	W-12	36" x 55"	91"	14 ft ²
			W-13	36" x 55"	91"	14 ft ²
			W-14	36" x 55"	91"	14 ft ²
			W-15	39" x 31"	69"	8 ft ²
WG-10	39" x 31"	69"	W-16	39" x 31"	69"	8 ft ²
WG-11	51" x 35"	87"	W-17	51" x 35"	87"	13 ft ²
WG-12	50" x 31"	80"	W-18	50" x 31"	80"	11 ft ²



HOVER

Complete Measurements

1820 Paul Street, Fort Myers, FL
OPENINGS

Windows (cont.)

Group	Group Width x Height	Group United Inches	Opening	Width x Height	United Inches	Area
W-G-14	50" x 31"	80"	W-19	50" x 31"	80"	11 ft ²
W-G-15	70" x 31"	101"	W-20	34" x 31"	64"	7 ft ²
			W-21	34" x 31"	64"	7 ft ²
			Total	-	1586"	204 ft ²

Powered by



© 2023 HOVER Inc. All rights reserved. This document and the images, measurement data, format and contents are the exclusive property of HOVER. HOVER is the registered trademark of Hover Inc. All other brands, products and company names mentioned herein may be trademarks or registered trademarks of their respective holders.

Use of this document is subject to HOVER's Terms of Use and is provided "as is." HOVER makes no guarantees, representations or warranties of any kind, express or implied, arising by law or otherwise relating to this document or its contents or use, including but not limited to, quality, accuracy, completeness, reliability, or fitness for a particular purpose.

PROPERTY ID: 9746348

CASL LEE COUNTY

20 JUL 2023

Page 20



HOVER

Complete Measurements

1820 Paul Street, Fort Myers, FL
OPENINGS

Doors

Opening	Width x Height
D-1	32" x 80"

*Door height and width have been snapped to standard

Entire Doors

Opening	Width x Height	Area
D-1	33" x 72"	16 ft ²
Total	-	16 ft ²

*Total door square footage includes entire door package (e.g. with transoms, sidelites, etc.)



HOVER

Complete Measurements

1820 Paul Street, Fort Myers, FL
ROOF FACETS

Roof Facets

Facet	Area	Pitch
RF-1	378 ft ²	0/12
RF-2	327 ft ²	0/12
RF-3	37 ft ²	2/12
RF-4	529 ft ²	2/12
RF-5	128 ft ²	2/12
RF-6	713 ft ²	2/12
RF-7	483 ft ²	0/12





HOVER

Complete Measurements

1820 Paul Street, Fort Myers, FL
ROOF AREA

Roof	Facets	Total
Total	7	2595 ft²





HOVER

Complete Measurements

1820 Paul Street, Fort Myers, FL
ROOF PITCH

Roof Pitch	Area	Percentage
2 / 12	1407 ft ²	54.22%
0 / 12	1188 ft ²	45.78%

